

F O R E W O R D

The following is a detailed outline and itinerary of our 1952 Educational Trips. These trips have been authorized by our management as part of a continuing Sales Development Program on the theory that in today's competitive transportation picture, a good salesman is a well-informed salesman.

W E Poulter

T R I P 4

Monday A. M.	December 8	Meeting General Office
Monday P. M.	December 8	Meeting General Office
Lunch - S. F.		
Dinner - S. F.		
Stay - Palace Hotel, San Francisco		
Tuesday A. M.	December 9	Leave Oakland by freight train. Arrive Stockton early P. M. for tour part Stockton and overnight.
Breakfast - S. F.		
Lunch - New Frog, Stockton		
Dinner - Wool Growers Inn, Stockton		
Stay: Hotel Stockton, Stockton		
Wednesday	December 10	Complete tour Stockton territory and part Sacramento, and overnight.
Breakfast - Hotel Stockton, Stockton		
Lunch - Del Prado, Sacramento		
Dinner - Chuck Wagon, North Sacramento		
Stay: El Rancho Hotel, Sacramento		
Thursday	December 11	Complete tour Sacramento territory. Return Oakland-San Francisco via Pittsburg, California, arriving approximately 5 P. M., and overnight.
Breakfast - El Rancho Hotel, Sacramento		
Lunch - El Nido, Lafayette		
Dinner - S. F.		
Stay: Palace Hotel, San Francisco		
Friday A. M.	December 12	8:30 A. M. - Meeting General Office
Friday P. M.	December 12	Tour San Francisco territory and part San Jose and overnight.
Breakfast - S. F.		
Lunch - Oliver's, South San Francisco		
Dinner - St. Claire, San Jose		
Stay: St. Claire, San Jose		
Saturday	December 13	Complete San Jose territory and Oakland
Breakfast - St. Claire, San Jose		
Lunch - Showboat, Oakland		
Dinner - San Francisco		
Stay: Palace Hotel, San Francisco		

T R I P # 4

December 8 to 13th

<u>NAME</u>	<u>TITLE</u>	<u>OFFICE</u>
Western:		
E. R. Millfelt	Traffic Representative	Los Angeles
F. McMullin	General Agent	Portland
L. T. Lamka, Jr.	Chief Clerk	Reno
O. L. Hocker, Jr.	Chief Clerk	Sacramento
R. W. Crocker	Traffic Representative	Salt Lake City
W. V. Hanson	Traffic Representative	San Jose
R. Munce, Jr.	Traffic Representative	Stockton
T. Plesko	Traffic Representative	Seattle
L. R. Glascock	Clerk	Salt Lake City
W. A. Linehan	Clerk	Fresno
A. M. Allen	Traffic Representative	San Francisco
Eastern:		
K. A. Rank	Chief Clerk	Chicago
H. W. Nordberg	Eastern Foreign Freight Agent	Chicago
R. B. Ritchie	Traffic Representative	Minneapolis
U. Hart	Traffic Representative	Detroit
J. G. Edwards	Psgr. Traffic Representative	New York
J. J. Kirch	General Agent	Omaha
M. M. Deeley	Traffic Representative	Pittsburgh
J. P. Conger	General Agent	Washington, D. C.
C. E. Edwards	Chief Clerk	St. Louis
A. R. Hudson	Chief Clerk	New York
General Office:		
M. E. Boyd	Freight Traffic Manager	San Francisco
F. W. Steel	Assistant Freight Traffic Manager	San Francisco
C. K. Faye	Assistant Freight Traffic Manager	San Francisco
F. B. Stratton	Industrial Commissioner	San Francisco
W. C. Mittelberg	General Freight Agent	San Francisco
K. R. Stoney	Assistant General Freight Agent	San Francisco
R. B. Redus	Trainee	San Francisco
R. C. Madsen	Trainee	San Francisco
Following will be on Trip #4 Monday through Thursday (Dec. 8 to 11th, inclusive.);		
S. Glatt	Traffic Representative	Oakland
W. Logan	Traffic Representative	Oakland
E. P. Jagels	Asst. to Industrial Commissioner	San Francisco
J. P. Abbott	Rate Analyst	San Francisco
L. E. Pope	Division Analyst	San Francisco
Following will be on Trip #4 Friday and Saturday (Dec. 12 and 13th);		
F. S. Murphy	Traffic Representative	San Francisco
W. E. Crawford	Traffic Representative	San Francisco
W. F. McGrath	Rate Analyst	San Francisco
G. McDermid	Rate Analyst	San Francisco
O. H. Larson	Chief Clerk to Supt. of Trans.	San Francisco

JOHN C. NOLAN, TOUR CONDUCTOR

TABLE OF CONTENTS

I. Foreword

II. INDEX OF TERRITORIES

<u>Territory</u>	<u>Page No.</u>
Oakland	1, 16 - 18, 31 - 37
Sacramento	13 - 16
San Francisco	19 - 27
San Jose	28 - 30
Stockton	2 - 8
Tidewater Southern	9 - 12

III. INDEX OF STATIONS

<u>Name</u>	<u>Territory</u>	<u>Page No.</u>	<u>Item No.</u>
Alba	T. S.	9	27
Altamont	Stockton	2	5
Antioch	Stockton	16	42
Antioch-Martinez Switching Zone	Oakland	16	43
Aurora	T. S.	10	32
Bancroft	Oakland	18	50
Carbona	Stockton	2	7
Carbona Branch	Stockton	2	6
Carpenter	Oakland	31	73
Carrolton	T. S.	9	25
Centerville	San Jose	30	70
C. C. T. Shops	Stockton	8	15
Concord	Oakland	18	48
Curtner	San Jose	30	68
Decote	Oakland	31	74
Enroute to Pittsburg	Sacramento	17	41
Enroute to San Jose	San Francisco	27-28	63-64
Escalen	T. S.	9	29
Fitz	Stockton	3	10
French Camp	Stockton	3	12
Garden	Stockton	8	18
Grass	Stockton	8	19

TABLE OF CONTENTS (CONTINUED)

III. Index of Stations (Continued)

<u>Name</u>	<u>Territory</u>	<u>Page No.</u>	<u>Item No.</u>
Hayward	Oakland	31	75
Irvington	San Jose	30	69
Lafayette	Oakland	18	52
Lathrop	Stockton	3	11
Livermore	Oakland	1	3
Lodi	Stockton	8	16
Lyoth	Stockton	2	8
Manteca	T. S.	12	38
McHenry	T. S.	10	31
Meinert	Oakland	17	49
Meyers	T. S.	10	30
Milpitas	San Jose	30	67
Modesto	T. S.	10 - 11	33
Modesto Colony	T. S.	11	35
East Modesto	T. S.	11	34
South Modesto	T. S.	11	36
Mulford	Oakland	32	77
Nichols	Oakland	18	46
Niles	Oakland	30	71
Oakland	Oakland	32 - 37	78 - 90
Oakland Metropolitan Area		32 - 33	78
Alameda		34	79
Oakland Industrial Area		34 - 35	80
W. P. Oakland Terminal Facilities		35	81
Oakland Terminal Industrial Area (OT)		36	82
Naval Supply Center		36	83
S. P. Mole		36	84
Outer Harbor Industrial Area		36	85
North Oakland Industrial Area		36	86
Oakland Terminal Railway		36	87
Sacramento Northern 40th & Shafter Freight Station		36	88
Emeryville Industrial Area		37	89
Berkeley Industrial Area		37	90
Ortega	Stockton	3	13
Pabrico	Oakland	31	72
Pittsburg	Oakland	17	44
Pleasanton	Oakland	1	1
Polk	Sacramento	13	39
Port Chicago	Oakland	17	47
Radium	Oakland	1	2
Rhodes	Stockton	2	9

TABLE OF CONTENTS (CONTINUED)

III. Index of Stations (Continued)

<u>Name</u>	<u>Territory</u>	<u>Page No.</u>	<u>Item No.</u>
Sacramento	Sacramento	13 - 16	40
San Francisco	San Francisco	19 - 26	53 - 61
Harbor Industries		19 - 22	54
Third Street Industrial Area		22	55
Third & Army Streets Industrial Area		22 - 23	56
Butchertown Industrial Area		23	57
Loomis - Barneveld Streets Industrial Area		23	58
Army Street Industrial Area		24	59
Uptown Industrial Area		24 - 25	60
Visitation Valley Industrial Area		26	61
San Jose	San Jose	28 - 30	66
San Leandro	Oakland	31	76
Santa Clara	San Jose	28	65
Shell Point	Oakland	17	45
Simms	T. S.	9	24
South San Francisco	San Francisco	27	62
Stockton	Stockton	3 - 7	14
Summer Home	T. S.	9	23
Terminus	Stockton	8	20
Thornton	Stockton	8	21
Trevarno	Oakland	1	4
Turlock	T. S.	12	37
Turner Station	T. S.	9	22
Van Allen	T. S.	9	26
Villinger	Stockton	8	17
Volstead	T. S.	9	28
Walnut Creek	Oakland	18	51

Oakland Yard to Stockton via Train 62.

Schedule: Lv. Oakland 5:30 A. M.

Arr. Stockton 10:30 A. M.

Train 62 handles Bay Area loads for the east and northwest, connecting at Stockton with the SWG and the SFe for Southern California; also pickup San Jose dead freight and perishable loads at Niles.

This train will operate through Oakland, Fruitvale, Melrose, San Leandro, Hayward, Niles, Pleasanton and Livermore.

We are going to see portions of items 78, 76, 74, 73, 72 and 71 on pages 31 to 33 which immediately adjoin Western Pacific main line. This portion of the trip will be retraced by bus on Saturday morning from San Jose to Oakland.

1. PLEASANTON -- W. P. and S. P. (No Interchange) --Mr. J. H. Stahlnecker, Agent (WP)

Garatti Winery (WP)

2. RADUM -- W. P. and S. P. (No Interchange)

H. J. Kaiser Company; heavy shipper of sand and gravel (WP and SP)

3. LIVERMORE -- W. P. and S. P. (No Interchange)

Wente Bros.; winery

Concannon Winery

The above wineries are located off track, but can use W. P. Livermore Station facilities for loading.

Cresta Blanca Wine Co. (Div. Schenley Industries, Inc.) is also located off track but has storage warehouse at Livermore served by S. P. Only practical way we can handle is S. P., Calif. Jct., W. P.

4. TREVARNO -- W. P. and S. P. (No Interchange)

Coast Manufacturing Company (WP and SP)

STOCKTON



LEGEND

- WESTERN PACIFIC R.R.
- AT & S.F. R.R.
- SOUTHERN PACIFIC R.R.
- T.S. R.R.
- C.C.T. R.R.
- S.T. & E.R.R.

FACILITY

STOCKTON STREET LOCATION

- 1 JUNCTION OF W.P. & T.S. ORTEGA
- 2 W.P. YARDS
- 3 W.P. - S.P. INTERCHANGE
- 4 S.P. YARDS
- 5 MAIN ST. & E. CHANNEL
- 6 W.P. YARD OFFICE
- 7 W.P. YARD OFFICE
- 8 TEAM TRUCK
- 9 TEAM TRUCK
- 10 W.P. - S.P. INTERCHANGE
- 11 S.P. YARDS
- 12 W.P. FREIGHT DEPOT
- 13 W.P. PASSENGER STATION
- 14 S.P. FREIGHT DEPOT
- 15 S.P. PASSENGER STATION
- 16 S.P. PASSENGER STATION
- 17 NEW FREIGHT DEPOT
- 18 W.P. - C.C.T. INTERCHANGE
- 19 S.P. FREIGHT DEPOT
- 20 W.P. - S.T. & E. INTERCHANGE
- 21 TEAM TRUCK
- 22 NORTH CHANNEL TRUCK
- 23 AUTO PLANT & CHANNE
- 24 W.P. YARD
- 25 W.P. YARD
- 26 W.P. YARD
- 27 W.P. YARD
- 28 AUTO PLANT & CHANNE

STOCKTON TERRITORY

5. ALTAMONT -- W. P.

From Spanish, meaning "high mountain."

Is the pass for both Western Pacific and Southern Pacific from San Francisco Bay Area, through the Coast Range to the San Joaquin Valley.

From Oakland, elevation 18 feet, grade rises to an elevation of 752 feet at Altamont, a distance of 50 miles. From Altamont to Stockton, the descent is 730 feet in 37 miles.

6. CARBONA BRANCH -- W. P.

This branch line is 2.2 miles in length. The following industries are located on the Carbona Branch:

Teekay Mines, Inc.; manganese ore
Pacific Coast Aggregates, Inc.; rock, sand, and gravel plant
Tracy Rock, Sand & Gravel Company; rock, sand, and gravel plant

7. CARBONA -- W. P. Mr. S. C. McDavid, Agent

Carbona--Banta Irrigation District

Agriculture district--principal production: Tomatoes, Onions, and Alfalfa.
Freight depot and team tracks

Industries:

George Covert)
Jesse Ayala) Packing and Shipping of Vegetables
Hayman & Covert)
Lambert Marketing Co.)

Kellogg Warehouse; General purpose warehouse. Portion presently leased to H. J. Heinz Co. for storage of canned goods from their Tracy, California plant

8. LYOTH -- W. P. and S. P. -- Mr. H. A. Sullivan, Agent (WP)

Sharpe General Depot, U. S. Army Quartermaster Supply Section for West Coast and Pacific Overseas Area. Quartermaster Corps installation consisting of open and closed storage. Served by W. P. and S. P. through separate interchange tracks. All switching within base performed by government power and crews.

9. RHODES -- W. P.

Cochran Co. Inc.; packer and shipper of vegetables
Rhodes Warehouse Company; bean cleaner and storage, 70,000 bag capacity

10. FITZ -- W. P.

Under construction is \$10 million dollar Dueul Vocational Institute project, to be operated by State of California as correctional school for 1250 prisoners.

11. LATHROP -- W. P. and S. P. -- Mr. W. H. Plank, Agent (WP)

Sharpe General Depot, U. S. Army Engineer's Supply Section and Transportation Corps Supply Center consisting of open and closed storage. Served by W. P. and S. P. through separate interchange tracks. All switching within base performed by Government power and crews.

12. FRENCH CAMP -- W. P. and S. P. -- (No Interchange) Seasonal Agent

Western Pacific team tracks, capacity 60 cars. Used at present primarily for outbound vegetable loading.

13. ORTEGA -- W. P. and S. P. (No Interchange)

Stockton Union Stockyards, served jointly.
Site of proposed General Mills Inc. feed mill to be served by S. P.

14. STOCKTON -- W. P., T. S., C. C. T., S. T. E., AT&SF, S. P. -- Mr. Angelo Prato, Agent (WP)

Note: All industries shown and listed under Stockton are within the reciprocal switching limits of the Western Pacific and Santa Fe R. R.

(A-1) Western Pacific 1500 car capacity yard and icing station. This yard jointly serves the W. P., T. S. and Sacramento Northern. Opportunity will be afforded to get a general idea of the yard operations at this important terminal.

Sacramento Northern presently operate daily freight service, except Sunday, over Santa Fe tracks between Stockton and Port Chicago under a bridge arrangement.

The Yard is equipped with public address system which expedites issuance of instructions from Yardmaster to Yard forces. Communication between Yardmaster and switch engines is by means of two-way radio.

W. P. and S. P. interchange tracks are at the west end of the yard, each having a capacity of 45 cars. S. P. yards are located west of W. P. main line and yard. The proximity of W. P. and S. P. yards permits prompt interchange of cars.

Valley Ice Company--Icing plant for perishables originating on Western Pacific and Tidewater Southern, also Central California Traction Company when routed in connection with W. P. Manufacturing capacity, 400 tons per day; storage capacity 10,000 tons and concrete icing platform served by two 20-car capacity tracks.

14. (A-1) (Continued)

Western Pacific--Santa Fe interchange tracks, each having capacity of 40 cars. The Santa Fe Yards are located just beyond the east end of the W. P. Yards. The proximity of W. P.--S. Fe yards permits prompt interchange of Inside Gateway Traffic and other traffic routed via California Junctions--Santa Fe.

(B-1) Outlined on Map No. 6 attached are 32 acres of potential industrial land at Stockton owned by the Western Pacific. It is well located with relation to Western Pacific rails, highways and all utilities.

(B-2) Western Pacific freight house and team tracks.

Principal industries and facilities of the Union Street Area, served exclusively by W. P., except as shown:

National Carloading Corporation
Merchant Shippers Association
Stor-Dor Forwarding Company
Dickman Transfer Company
Universal Carloading Company
Republic Carloading Company
Minneapolis Moline Co. (WP-SP)
Hobbs Parsons Company; wholesale produce
California Fireproof Storage Company
Ten-ton crane and platform at Market and Lafayette Streets
Super-Mold Corporation, Oak and Union Streets, served by W. P. spur;
foundry, castings.
El Dorado Brewing Company, Oakland and Stanislaus Streets, use Western Pacific Flora Street Team Track.
Sears Roebuck & Company, Park and Aurora Streets, served by S. P. spur.
Western Pacific old North Yard and mixing plant of E. F. Mitchler
(H. J. Kaiser Company)
Milligan Building Materials, Union and Harding Way, served by W. P. spur.

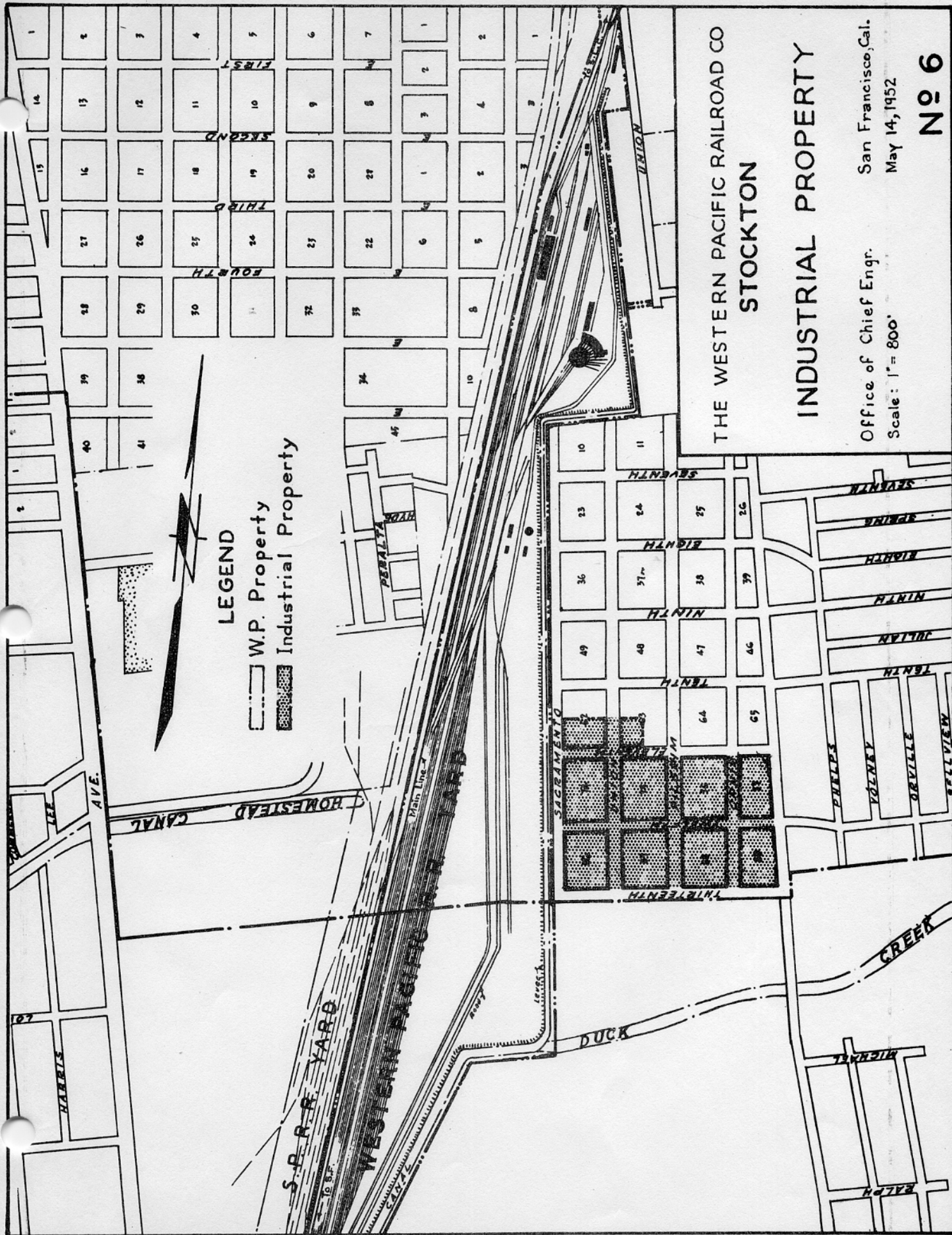
(B-3) W. P.--C. C. T. Interchange, Union and Park Streets

The C. C. T. is jointly owned by the Western Pacific, Santa Fe, and the Southern Pacific. C. E. McDonald is General Manager. Operation is between Stockton and Sacramento, a distance of 52.1 miles, with daily freight service, except Sunday, and including Sunday during grape shipping season.

(B-4) W. P.--S. T. & E. Interchange, Union and Roosevelt Streets

S. T. & E. Railroad, owned by private interests, operating between Stockton and Linden, California, a distance of 14 miles. They operate line and switching service to meet requirements of customers. Principal tonnage handled by S. T. & E. consists of beans, onions, asparagus, walnuts and canned goods.

(B-5) Stockton Box Company (handling shook) and Tartar, Webster & Johnson, Inc., (wholesale lumber distributors) 1800 Marshall Ave., served by both Western Pacific and Southern Pacific.



14. (C-1) Industries served by the Western Pacific North Channel Line:

Stephens Brothers Boat Works; shipbuilders
Colberg Boat Works; shipbuilders
Diamond Match Company; retail lumber
Guntert & Zimmerman; shipbuilders
Kyle & Company; steel fabricators
Koehring Company; manufacturers of steel equipment
Walter Johnson Company; salvage operators
Scruggs and Laidlaw; distributors steel windows from Michael Flynn
Mfg. Company, Philadelphia

(C-2) Western Pacific North Channel Terminal Tracks--30-ton power crane and automobile unloading platform

(C-3) West Weber Avenue Industrial Section:

Lawrence Warehouse Quick Freezing Plant; QMMC contract butchers (SP)
Wilbur Ellis Company Warehouse; fertilizer and feed (SP)
Poultry Producers of Central California (SP)
Blake, Moffitt & Towne; paper distributors (SP)
Haslett Warehouse; general warehouse (SP)
Ralston Purina Company; feed and cereal distributors (SP)
Delta Warehouse Company; general warehouse (SP)
Southern Pacific Wharf Warehouse; 16-car spot, leased to perishable shippers
Western Pacific Wharf Warehouse; 20-car spot, leased to perishable shippers
Santa Fe Wharf Warehouse; 25-car spot, leased to perishable shippers
Union Ice & Cold Storage; 20-car spot, served jointly by W. P. & AT&SF
Stockton Hay & Grain; served jointly by W. P. & AT&SF
Shober Sales; mfg. welding rods, served jointly by W. P. & AT&SF

(C-4) Industries on Washington Street served by S. P.:

McCormick & Baxter Creosoting Yard
California Cedar Products; pencil slats
Associated Box & Crate Company; shook

(C-5) Port of Stockton; rail and water terminal for intercoastal and off shore vessels--served by Municipal Belt Railroad operated alternate years by Western Pacific, S. P., and Santa Fe. Port facilities include the following:

1. Grain Terminal
2. Bulk handling facilities
3. Four general storage brick warehouses, each 900 feet in length and containing a total of 405,000 sq. ft.
4. Six covered piers--3,300 feet transit warehouse and docks, with capacity of eight ocean going vessels. Pier shed capacity is 350,000 sq. ft.

14. (C-5) (Continued)

Industries located in Port Facilities:

Lumber Distributors, owned and operated by Santa Fe Lumber Co., a subsidiary of Weyerhaeuser Timber & Lumber Co.
Cotton Compress (Haslett Warehouse Co.)
Pacific Molasses Company, Ltd.
Santa Cruz Portland Cement Company
Ludlow Manufacturing & Sales Company; jute bagging

- (D-1) Stockton Annex--Sharpe General Depot, U. S. Army Engineers Supply Section, and Transportation Corps Supply Center. Warehouses and open storage adjacent to Port of Stockton served by Municipal Belt trackage.

- (D-2) Naval Supply Annex--Rough & Ready Island, U. S. N. Inland Supply Depot for Oakland Naval Supply Center

Warehouses and open storage. Served by W. P., Santa Fe and S. P. through Municipal Belt Railroad facilities. All switching within base performed by Government power and crews.

- (D-3) Industries on West Charter Way served by Santa Fe:

Linde Air Products Company; oxygen and acetylene plant
Flotill Products, Inc.; cannery
Geo. A. Hormel Company, cannery
Pacific Can Company
Allen Products Company; honey packers

- (D-4) Fibreboard Products Inc., Church Street; served by S. P. and Santa Fe

- (D-5) Industries on Scotts Avenue served by W. P.

Paramount Seed Company
Grainger Warehouse; general storage
Electric Planing Mill; lumber finishing
Western Warehouse Company; general storage
San Joaquin Lumber Company; retail lumber
Stockton Ice & Fuel Company
San Joaquin Brick Company; gravel and ready-mix plant

- (D-6) Santa Fe Freight Depot and Team Tracks

Industries served by Santa Fe:

National Ice & Cold Storage Company
Delta Frozen Foods
United Grocers; food distributors
Swift & Company; meat distributors branch

14. (E-1) W. P. McKinley Avenue Drill Track, serving the following industries:

Stockton Brick & Tile Company
Laurel Potteries
Pacific Gas & Electric Pole Yard
M. J. B. Construction Company; gravel bunkers
American Can Company; new plant located on 39-acre tract, also served by S. P. Started operations July 1, 1952. Capacity 350 million containers annually.
Quaker Oats Company; purchased 10-acre tract in this area for a cereal and feed plant to be served by W. P.--S. P. Construction date of new plant indeterminate.

(E-2) South Aurora Street Industries served by S. P.:

Holt Brothers; Caterpillar tractor distributors
Hickinbotham Brothers; iron and steel products
Central Valley Hardware Company
Poph-Itt Cereal Company; cereal manufacturers
Tay-Holbrook; plumbing supplies
Growers Fertilizer Company
Austin Brothers; wholesale hardware
Massey-Harris Company; wholesale implements
H. C. Shaw Company; wholesale implements
W. P. Fuller Company; paints and glass
Smith & Hansen; wholesale grocers
Berberian Brothers; liquors
Zellerbach Paper Company; paper distributing branch

(E-3) Southern Pacific Freight House, Sacramento and Market Streets; team tracks and carloading facilities

(E-4) Industries east of Wilson Way served by S. P.:

Nobb Hill Brands; rice products
Richmond Chase Company; canners
Standard Oil Company of California; storage depot
Wood Canning Company; canners
Continental Can Company
Marley Company; wooden water coolers

(E-5) Industries and facilities served by C. C. T.

Mor-Pak Preserving Corporation, Linden Road; cannery
Harris Mfg. Company; Wilson Way, implements
M. Davidson Company; Wilson Way, scrap dealer

Freight Depot and Team Track, Wilson and Way and Weber Avenue.

(E-6) Industries served by S. T. & E. at East Stockton:

Triangle Lumber Company; retail lumber
Frank M. Wilson Company, canners
Montgomery Ward Warehouse
M. Sweet and Sons; furniture
Barosso & Kelly; produce shippers

15. SHOPS -- C. C. T.

Team tracks and two public loading sheds
J. I. Case Company
Petroleum Products Corporation

16. LODI -- C. C. T. -- S. P.

Note: All industries shown and listed under Lodi are within the reciprocal switching limits.

Pacific Fruit Exchange (CCT-SP)
Stokeley Van Camp Company (CCT-SP)
American Fruit Growers (CCT-SP)
California Fruit Exchange (CCT)
Old Vine Fruit Growers (CCT)
Heggblad-Marguleas (CCT)

17. VILLINGER -- W. P.

Woodbridge Vineyard Association Winery; capacity 3,400,000 gallons

18. GARDEN -- W. P.

stockyards

19. GRASS -- W. P.

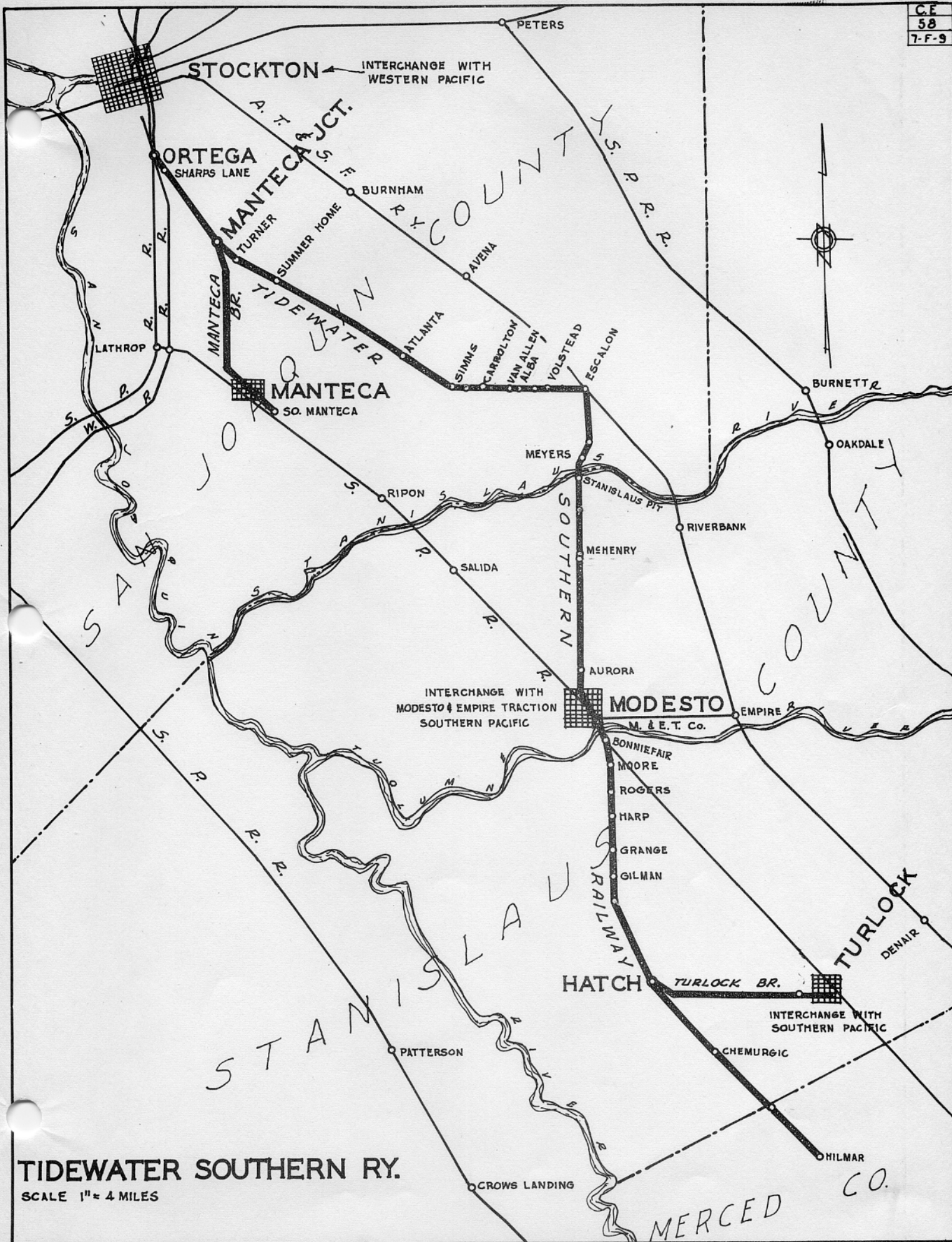
Atkins Kroll Company; vegetable packing and loading shed; Sales Agents for Mendelson-Zeller Co.

20. TERMINOUS -- W. P.

Wharf Warehouses; vegetable packing and loading sheds

21. THORNTON -- W. P.

Freight House, team tracks, and stockyards
Thornton Canning Company



TIDEWATER SOUTHERN TERRITORY

The Tidewater Southern Railway Company is a wholly-owned subsidiary of The Western Pacific Railroad Company and operates from Stockton to Hilmar, California, a distance of 49.8 miles, with branch lines serving Manteca and Turlock, California.

22. TURNER STATION -- T. S.

Team track; juice grape and onion loading shed

23. SUMMER HOME -- T. S.

Public loading sheds; juice grapes
Chinchiolo Brothers packing shed; juice grapes

24. SIMMS -- T. S.

Public loading sheds; juice grapes
Team track facilities; watermelons
Franzia Brothers Winery; capacity 3,000,000 gallons

25. CARROLTON -- T. S.

Privately owned loading sheds; juice grapes
Dosio Winery; capacity 130,000 gallons
Costa Brothers; juice grapes
Licciardi Brothers; juice grapes

26. VAN ALLEN -- T. S.

Public loading shed; juice grapes

27. ALBA STATION -- T. S.

Allied Grape Growers, Inc.; winery, 11,500,000 gallons capacity. A cooperative organization formerly known as Petri Wine Company. Sales are now handled by Petri Wineries, San Francisco.

28. VOLSTEAD -- T. S.

Privately owned loading shed; juice grapes.

29. ESCALON -- T. S. and SANTA FE (No Interchange) Mr. A. G. Tibbetts, Agent (TS)

Escalon Packers; cannery
Bianchi Winery; capacity 1,200,000 gallons
Solera Cellars; wine storage, capacity 250,000 gallons
Cadlolo Winery; capacity 285,000 gallons

30. MEYERS -- T. S.

Team track and public loading sheds; juice grapes

31. McHENRY -- T. S.

Team track and public loading sheds
Turlock Cooperative Growers; cannery

32. AURORA -- T. S.

May Warehouse Company; general warehouse
Union Oil Company of California; storage depot
Valley Builders Supply & Mill; inbound lumber
Team tracks for Northern Modesto lumber firms

33. MODESTO -- T. S., M. & E. T. -- S. P. Mr. G. N. Lyon, Agent (TS)

Note: All industries shown and listed under Modesto are within the reciprocal switching limits.

(A-1) T. S. North Modesto Yard

Public loading sheds; juice grapes
Central Valley Grocers; wholesale groceries
Ed J. Lyng Warehouse; bean storage, also, feed and grains
California Frozen Foods; frozen food packer
California Fruit Exchange; deciduous fruit shipper
T. S.--S. P. interchange tracks

(A-2) Industries Served by Southern Pacific

Barium Products, Ltd., a subsidiary of Westvaco Chemical Company--
Food Machinery Corporation; chemical plant
Borden Western Company; canned milk products
Modesto Produce Packing Company; seasonal perishable shipper
Grange Company; feed mill
Floden Button Company; poultry shippers
American Lumber Company; retail lumber
Stanislaus Lumber Company; retail lumber
J. S. West & Company; feed, tires and furniture
Modesto Lumber Company; inbound lumber
Rose Brothers; wholesale produce dealer
California Packing Corporation; dried fruit
Rosenberg Brothers & Company; bean warehouse and grain dealer
Poultry Producers of Central California; poultry products, inbound feed

(A-3) Tidewater Southern Freight House and Team Tracks

(A-4) Flotill Products, Inc., jointly served by T. S.--M. & E. T.--S. P.

(A-5) Pacific Grape Products; canned goods (M&ET)

33. (B-1) Industries Jointly served by T. S. and M. & E. T.

T. S. and M. & E. T. interchange tracks
S & W Company; nuts
Northrup King; seeds
Johnson Dried Fruit
Chapman Dehydrator
Modesto Fruit Exchange; deciduous fruit shipper
United Lumber Yards, Inc.; inbound lumber
Lennig & Langdan Company (Pabst Beer Distributors)
Delta Distributing Company (Lucky Lager Beer Distributors)
J. B. Hill & Company; feed
Tri-Valley Packing Association; canners
Modesto Refrigerator Company & Cold Storage Plant
Stanislaus Food Products; canners
Valley Tractor Company; implements
Sears Roebuck & Company; warehouse
Boothe Fruit Company; Government Ration packing operation
Milk Producers Ass'n. of Central California; milk products
Rosenberg Bros.; dried fruits

34. EAST MODESTO--INDUSTRIES SERVED BY M. & E. T. ONLY--OUTSIDE MODESTO SWITCHING LIMITS

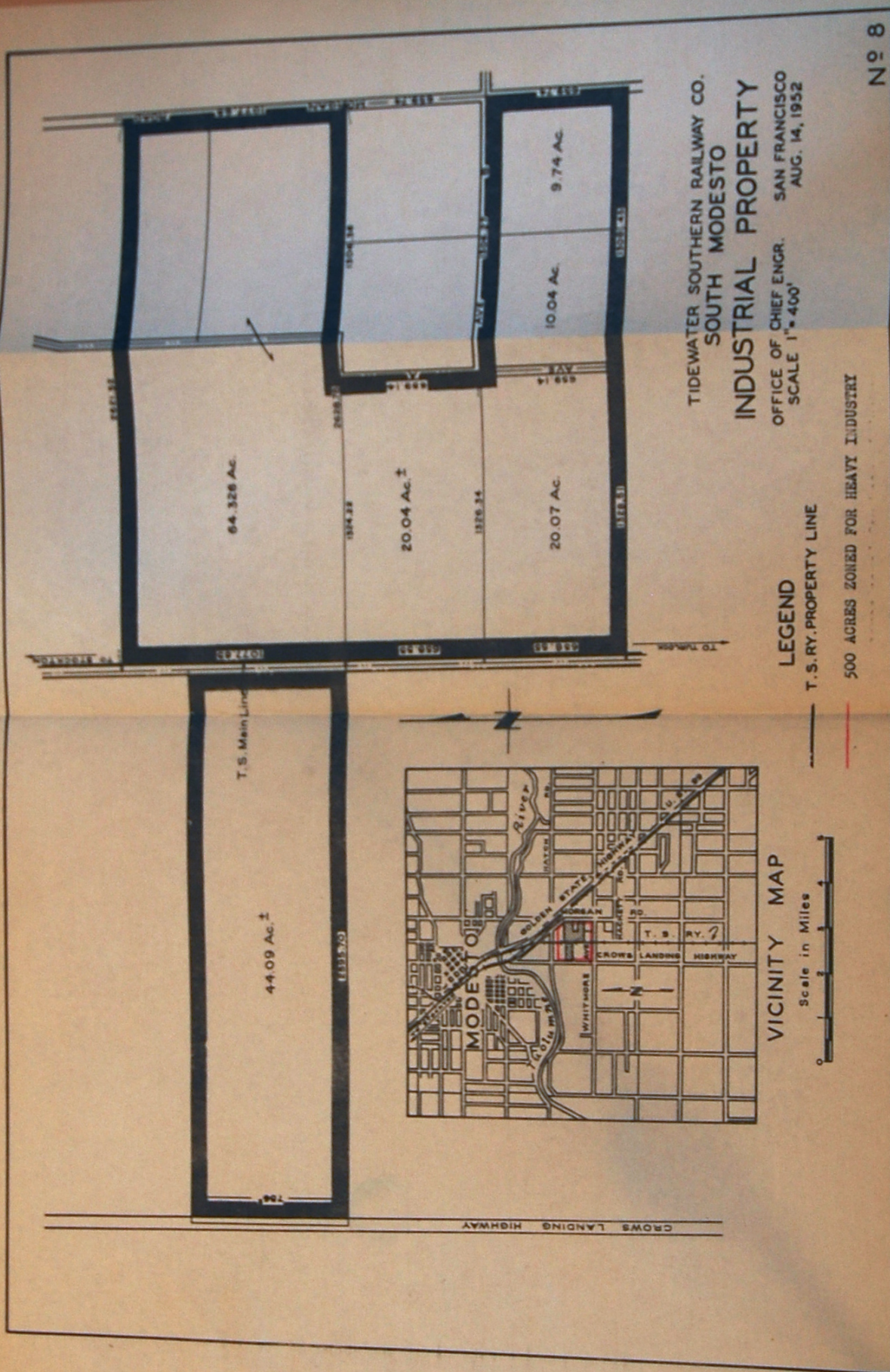
C. A. Swanson; turkey plant
American Fruit Growers; fruit shippers
California Turkey Growers Ass'n.; dressed turkeys
Modesto Terminal Refrigerating Plant; public cold storage and freezing whse.
Pacific Grape Products; Frozen Food Division
Chapman Frozen Foods
Winterking Packing Company; canned goods
Inglis Frozen Food
J. Coughlin; almonds and dried fruit
San Joaquin Walnut Growers Ass'n.
J. Hungerford Smith; confectionery syrups and supplies

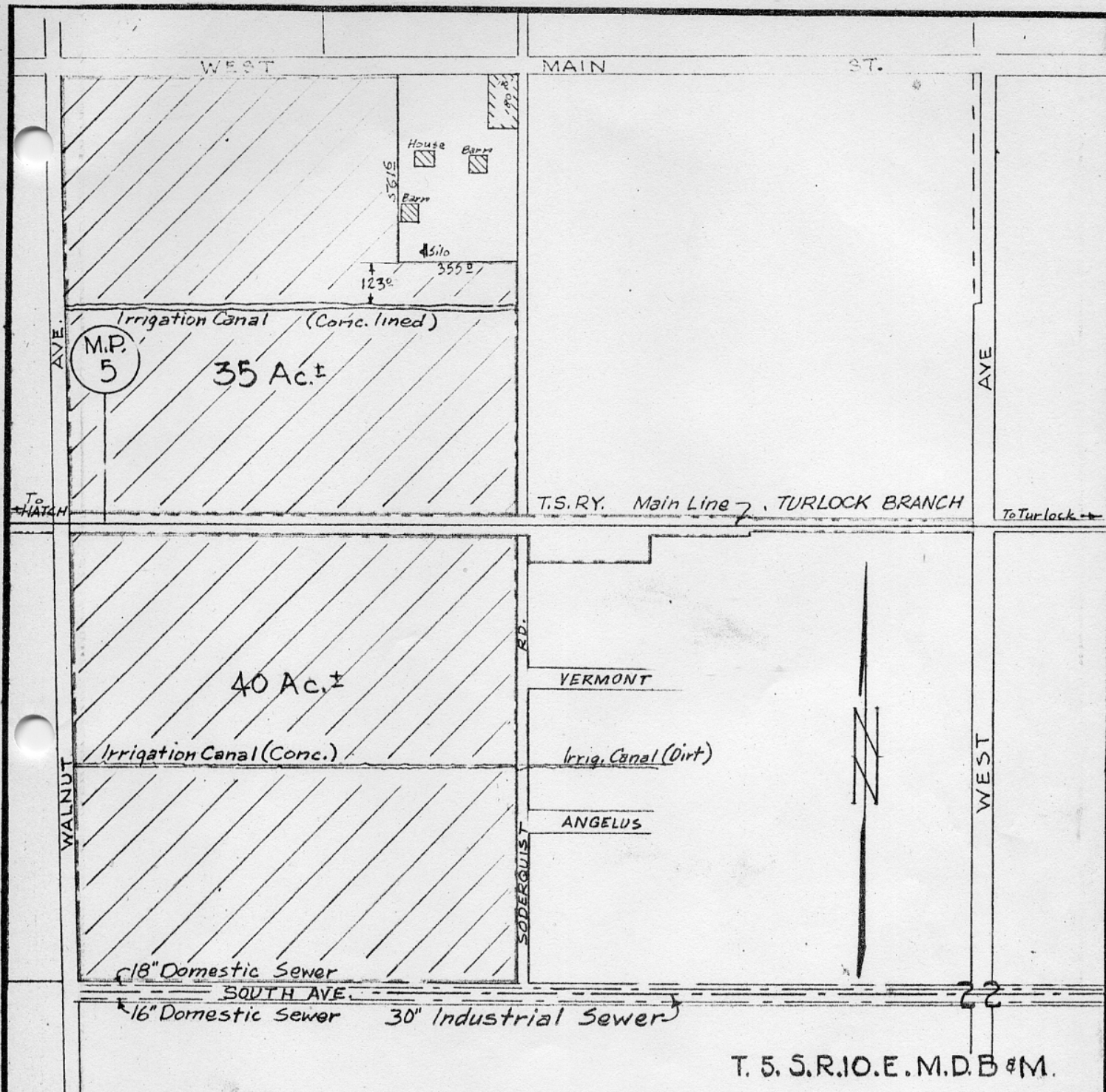
35. MODESTO COLONY--INDUSTRIES SERVED BY M. & E. T.--OUTSIDE MODESTO SWITCHING LIMITS

E. & J. Gallo Winery; 4,250,000 gallon capacity
Pacific Can Company

36. SOUTH MODESTO--INDUSTRIES SERVED BY TIDEWATER SOUTHERN--WITHIN MODESTO SWITCHING LIMITS

J. M. Equipment Company; implements
Strangio Brothers; juice grapes
Mobilhome Corporation of Modesto; ready built houses





~ LEGEND ~

- T.S.R.Y. Property
- T.S.R.Y. Industrial Property

TIDWATER SOUTHERN RAILWAY
TURLOCK BRANCH

TURLOCK

INDUSTRIAL PROPERTY

Office of Chief Engr., San Francisco

Scale: 1"=400'

May 1952

No 7

The Tidewater Southern recently purchased 168 acres of land at South Modesto for industrial development (See Map No. 8). The County has zoned approximately 500 acres for industry, including the acreage purchased by our company. The property is bisected by the T. S. and is located on good County roads connecting with State freeway a short distance away. Utilities will be extended to serve the property.

37. TURLOCK -- T. S. and S. P. (Interchange track facilities) Mr. L. A. Hupp, Agent (TS)

Note: All industries shown and listed under ^Turlock are within the reciprocal switching limits.

(A-1) Industries served by T. S.

Turlock Fruit Company; melon shipper
K. Knutsen Warehouse; general warehouse
Armour Creameries Inc., fresh and frozen poultry
Puccinelli Packing Company; cannery and dehydrator
Home Lumber Yard, Inc.; inbound lumber
Snider Lumber Products Company; outbound lumber
Tidewater Southern depot; team track and packing sheds
Roy M. Day; beans and feed
Christoffersen's Poultry, Egg & Feed Company; feed and poultry
E. T. Bettencourt; melon and vegetable shipper
Bay Cities Wholesale Hardware Company; inbound hardware
T. S.--S. P. interchange

(A-2) The Tidewater Southern, during the year 1951, purchased approximately 70 acres of industrial acreage located just outside the City Limits of Turlock, as shown on Map No. 7. It is bisected by the T. S. and bounded on three sides by good paved roads and a fourth is to be widened and improved. Power, gas and sewer lines now serve the property and water mains will shortly be extended to reach it. Water can, however, also be obtained through drilling of wells on the land.

(A-3) Industries served by S. P.

Valley Tractor Company; farm implements
G. W. Hume Company; cannery
Stockton Box Company; box shook
Poultry Producers of Central California; feed
The Grange Company; feed and beans
Peerless Milling Company, feed
Turlock Lumber Company; inbound lumber
O. G. Olson Company; melon shippers
Pacific Fruit and Produce Company; melon and vegetable shippers

38. MANTECA -- T. S. -- S. P. (No Interchange) Mr. R. S. Thomson, Agent (TS)

T. S. Team Track and public loading sheds; juice grapes
Spreckels Sugar Company (TS & SP)
Manteca Canning Company; cannery (SP)
Kraft Foods, Inc.; cannery (SP)
Manteca Warehouse Company; feed, mill, and bean storage (TS)

SACRAMENTO TERRITORY

39. POLK -- C. C. T. and S. P. (Interchange facilities)

Note: Industries shown are within reciprocal switching limits.

United States Army Signal Depot, U. S. Army Electronics and Communication Center (SP)

Proctor & Gamble Company; newplant now under construction (SP)

40. SACRAMENTO -- W. P., S. N., C. C. T., S. P. Mr. V. V. Scott, Agent (WP)

Note: All industries shown and listed under Sacramento are within the reciprocal switching limits.

(A-1) Campbell Soup Company. This plant was designed to serve the Eleven Western States. Since production is now insufficient to serve this entire area, plant expansions are now planned which will substantially increase our tonnage. (WP)

(A-2) Western Pacific South Sacramento Yard; general shops and icing station; 24th Street Road and Sutterville Road.

Recently installed two-way radio facilitates communication between Yardmaster and switch engines.

Headquarters of mechanical and store departments. Location of heavy duty locomotive and car repair shops.

General Repair Shop for diesel locomotives at Oroville Yard.

National Ice Co.; icing plant and dock for perishables originating on W. P. and S. N., capacity 180 tons of ice daily, ice storage capacity 5,000 tons. Plant includes cold and frozen food storage facilities.

(A-3) Broadway, "R", 19th and 20th Streets Industrial Area, served by W. P.

Sacramento Valley Tractor Company; International Harvester Company implements

Broili-Parks Company; household appliances

Jewel Tea Company

Heieck & Moran Company; plumbing goods

Weaver Tractor Company; Caterpillar tractors

Cobbledick-Kibbe Glass Company

California Builders Supply

Independent Paper Stock Company (Subsidiary Fibreboard Products Inc.)

Valley Wholesale Grocery Company; Warehouse No. 2

California Packing Corporation; Warehouse No. 15

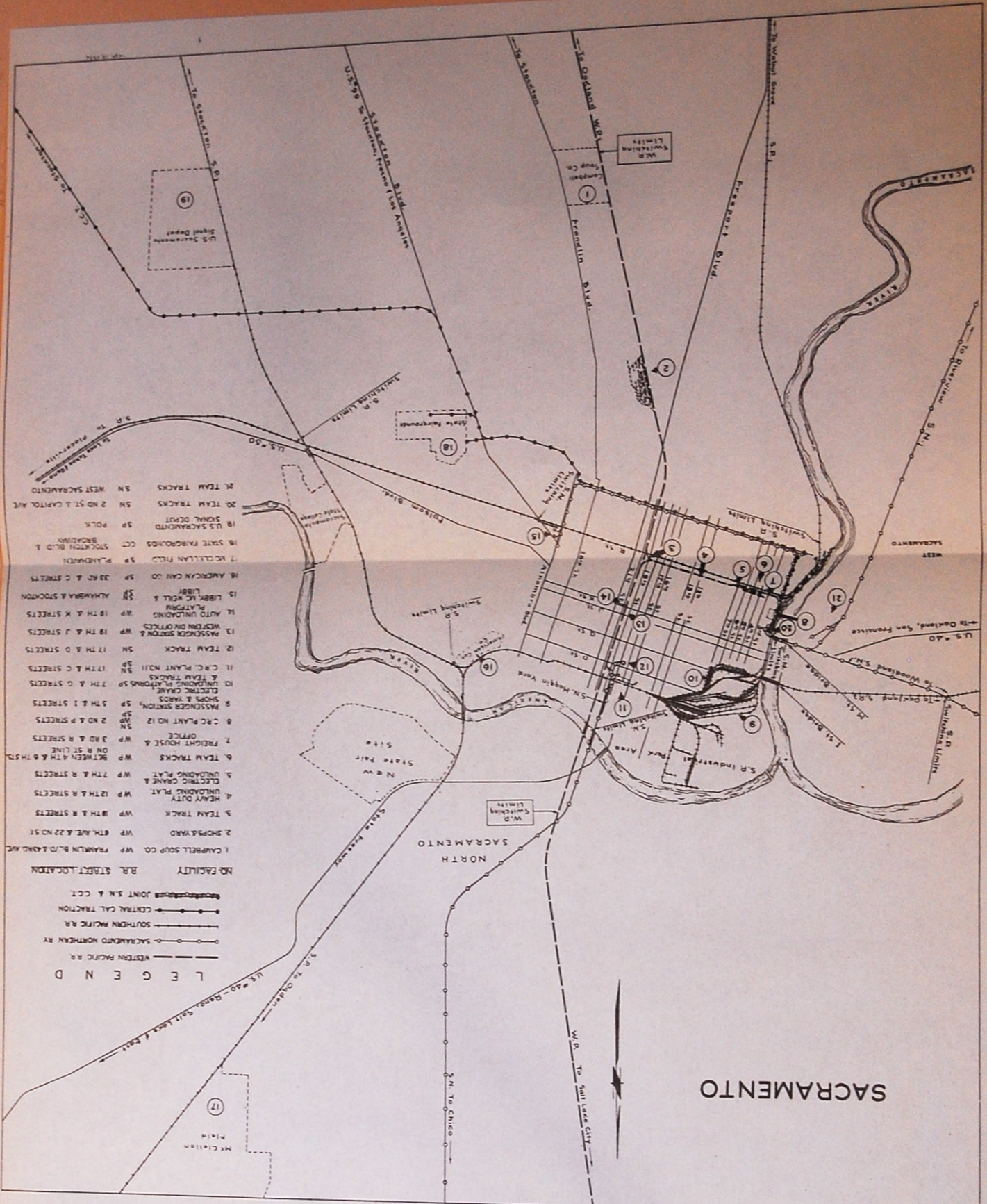
Additional warehouse under construction for lease to Cal-Pac

Lawrence Warehouse and Distributing Company

W. P. 19th & "R" Streets team track

(A-4) Division Offices: Location Traffic Control System, S. N. General Offices, Traffic Department and Passenger Depot.

SACRAMENTO



- LEGEND**
- JOINT S.N. & C.C.T.
 - CENTRAL CAL. TRACTION
 - SOUTHERN PACIFIC R.R.
 - SACRAMENTO NORTHEAST RY.
 - WESTERN PACIFIC R.R.

- NO. FACILITY**
- 1. CAMPBELL SOAP CO. WP. FRANKLIN BLVD. & 22ND ST.
 - 2. SHOPS & YARD WP. 8TH AVE. & 22ND ST.
 - 3. TEAM TRACK WP. 18TH & R STREETS
 - 4. HEAVY DUTY UNLOADING PLAT WP. 12TH & R STREETS
 - 5. ELECTRIC CRANE & UNLOADING PLAT WP. 7TH & R STREETS
 - 6. TEAM TRACKS WP. 9TH & R STREETS
 - 7. FREIGHT HOUSE & OFFICE WP. 3RD & R STREETS
 - 8. C.R.C. PLANT NO. 12 WP. 2ND & P STREETS
 - 9. PACKAGING SECTION WP. 5TH & I STREETS
 - 10. ELECTRIC CRANE & TEAM TRACKS WP. 7TH & C STREETS
 - 11. C.R.C. PLANT NO. 11 WP. 17TH & C STREETS
 - 12. TEAM TRACK SN. 17TH & D STREETS
 - 13. PASSENGER SECTION & WESTERN DIV. OFFICES WP. 19TH & J STREETS
 - 14. AUTO UNLOADING WP. 18TH & K STREETS
 - 15. LIBRARY, R.C. WALK & LIBRARY SN. ALHAMBRA & STOCKTON
 - 16. AMERICAN CAN CO. SP. 33RD & C STREETS
 - 17. WOODMAN FIELD SP. PLYMOUTH
 - 18. STATE FAIRGROUNDS C.C.T. STOCKTON BLVD. & BROADWAY
 - 19. U.S. SACRAMENTO SP. POLK
 - 20. TEAM TRACKS SN. 2ND ST. & CAPITOL AVE.
 - 21. TEAM TRACKS SN. WEST SACRAMENTO

40. (B-1) Libby, McNeill & Libby; cannery (SN-SP)
- (B-2) New S. N.--W. P. interchange track connection, north on 19th Street between "C" Street and "F" Street
- (B-3) Industries in "C"--16th Streets Industrial Area
Sacramento Produce Terminal (SP)
Golden State Milk Company (SN)
California Almond Growers Exchange Headquarters (SN)
California Packing Corporation Plant No. 11 (SN-SP)
S. N. team track 17th & "D" Streets
United Grocers warehouse (SP)
General Electric Supply Company (SP)
- (B-4) Globe Industrial Area (WP)
- The bridge passes over trackage of S. N. and W. P.
Moore Equipment Company
Union Wire Rope Company
Continental Chemical Company
Western Machinery Co.
Hardware Division of the Diamond Match Company
S. N. Haggin Yard
S. N.--S. P. interchange
- (B-5) S. N. Swanston Branch
- Kraft Foods Company
David Ostin Moulding Company
Essex Lumber Company
S. N. Team Track
- (B-6) McClelland Field (Sacramento Air Materiel Area)
- Presently served by S. P. at Planhaven outside Sacramento switching limits. S. N. will construct from Robla connection to internal trackage in field
- (B-7) S. P. "Industrial Park" Area
- California Spray Chemical Corp.
Kassis Bros. Wholesale Co.
Consolidated Products Co.
Coffin-Redington Co.
Zellerbach Paper Co.
Carpenter Paper Co.
McKesson-Robbins Co.
Wm. Volker Company
John Breuner Company
Sears-Roebuck Company
United Grocers--Bert McDowell Wholesale Grocer Co.
State of California Printing Plant
Continental Can Company
Bercut-Richards Packing Company

40. (C-1) West Sacramento Industrial Area--S. N.--Outside Sacramento Switching Limits.

Sunland Industries
Haslett Warehouse Co.
California Dehydrating Co.; rice products
Purity Stores; warehouse
Beagle Products Co.; rice products
Heffernan Supply Co.; lumber
State Box Company
L. H. Clawson Co., insulation
Rice Growers Association of California
E. Clemens Horst Co.
Morris P. Kirk & Sons, Inc. (proposed)
General Petroleum Co.
Shell Oil Co.

- (C-2) Front Street Industrial Area--S. P.

Pioneer Warehouse
Haslett Warehouse Co.
Western Van & Storage Company
Blake, Moffitt & Towne
Crane Company

- (C-3) Second Street Industrial Area--S. N.

Republic Carloading Company
Sacramento Cartage Company
National Carloading Company

- (C-4) Front Street Industrial Area (Continued)

Farmers' Rice Growers Cooperative (SN-SP)
California Packing Corporation Plant No. 12 (SN-WP-SP)

- (C-5) Approximately 18 acres of land owned by the W. P. and S. N. to be subdivided for industrial development.

- (C-6) C. C. T. and S. P. interchange

- (C-7) "R" Street Industrial Area

Industries Served by W. P.

Industries served by S. P.

Freight Forwarders:

Thomson Diggs Co.

International Forwarding Co.
Stor-Dor Forwarding Co.
Merchant Shippers Assn.
Universal Carloading & Distr. Co.
Joint W. P.--S. N.--C. C. T. Freight Station

W. P.--S. P. Interchange -- 3rd to 7th Streets on "R"

Bowers Drayage Co.
P. & A. Shippers
Klamath Potato Distributors

40. (C-7) (Continued) "R" Street Industrial Area

Industries served by W. P.

Industries served by S. P.

Sperry Flour Co. (General Mills)
Dalco Prods. Co. (Dallman Supply Co.)
7th & "R" Platforms & Team Track
W. P. Heavy Duty Crane
Pacific Cartage & Storage Co.
Goodyear Tire & Rubber Co.
W. P. Fuller Co.
Team Track & Platform -- 11th
& 12th on "R"
Westinghouse Supply Co.
Palm Iron Works
19th & "R" Team Track
California Packing Co. Whse. #15
Valley Wholesale Grocery Co. #2

Rainbow Liquor Co.
Atlas Distributing Co. (Bud-
weiser Beer)
Sunshine Biscuit Co.

Palm Iron Works
Clark Wheeler Co.
Crystal Ice & Cold Storage
B. L. Lancaster Grocery Co.
Valley Wholesale Grocery #1

41. ENROUTE TO PITTSBURG (Via Sacramento River Road)

- (A-1) Freeport (SP)
- (A-2) Opposite side of river, town of Clarksburg
American Crystal Sugar Co.
Holland Branch of S. N. Ry. beyond
- (A-3) Hood (SP)
Stillwater Orchards Co.; fruit shippers and cold storage
- (A-4) Courtland (SP)
- (A-5) Walnut Grove (SP)
- (A-6) Isleton (SP)
- (A-7) Rio Vista

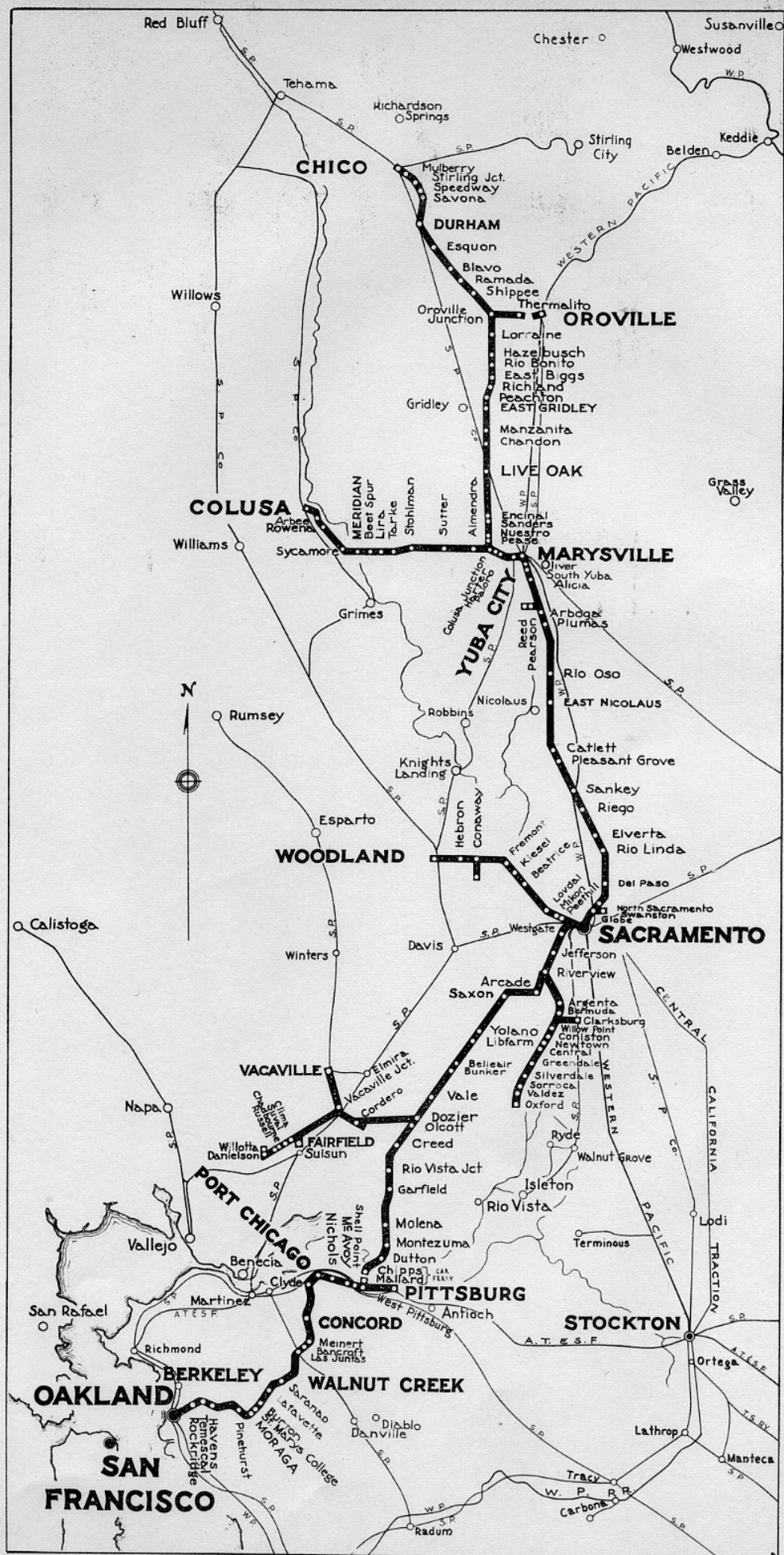
OAKLAND TERRITORY

42. ANTIOCH--SANTA FE (Included in Stockton General Agents Territory)

Fibreboard Products Inc.
Western California Cannery, Inc.
Hickmott Canning Company
Fulton Shipyards

43. ANTIOCH--MARTINEZ SWITCHING ZONE

Arrangements are effective between the Santa Fe and Southern Pacific whereby certain industries, located within the area bounded by Monsanto (ATSF) and



SACRAMENTO NORTHERN RAILWAY

43. (Continued)

Martinez (SP) on the west to but not including Antioch on the east, except that Glass Containers, Inc., in Antioch is included, have the equivalent of service by both of those lines whether switched by the Santa Fe or the S. P.

The practical effect of this is:

1. Designated industries served by the S. P. may be handled by the Santa Fe and Western Pacific to the extent that we have rates via Santa Fe and W. P.

2. Designated industries served by the Santa Fe may be handled by the S. P. and W. P. to the extent that we have rates via S. P. and W. P.

44. PITTSBURG--S. N., SANTA FE, S. P. (No Interchange) Mr. Jim Tennant, Agent (SN)

Defense Plant Corp. (Div. of U. S. Steel), foundry (ATSF)
Columbia--Geneva Steel Company (Div. of U. S. Steel) (SN-ATSF-SP)
Pioneer Rubber Company (ATSF)
Dow Chemical Company (ATSF)
Columbia-Geneva Steel Company Wire Mill (SN & ATSF)
Johns-Manville Corp. (ATSF)
Pacific Gas & Electric (power station under construction) (SN & ATSF)
Continental Can Company (plant under construction) (SN & ATSF)
Gladding, McBean & Company (SP)
Sacramento Northern Pittsburg Freight Station and Team Track

45. SHELL POINT--S. N. and S. P. (No Interchange)

Shell Chemical Corporation

46. NICHOLS--SANTA FE--S. P.

General Chemical Company

47. PORT CHICAGO--S. N., ATSF, S. P. A. Bierschwal, Joint Agent S. N.--ATSF

U. S. Naval Magazine. All switching within the reservation performed by Government crews and power.

48. CONCORD--S. N., S. P. (No Interchange)

49. MEINERT--S. N.

California Fruit Exchange; fruit shippers

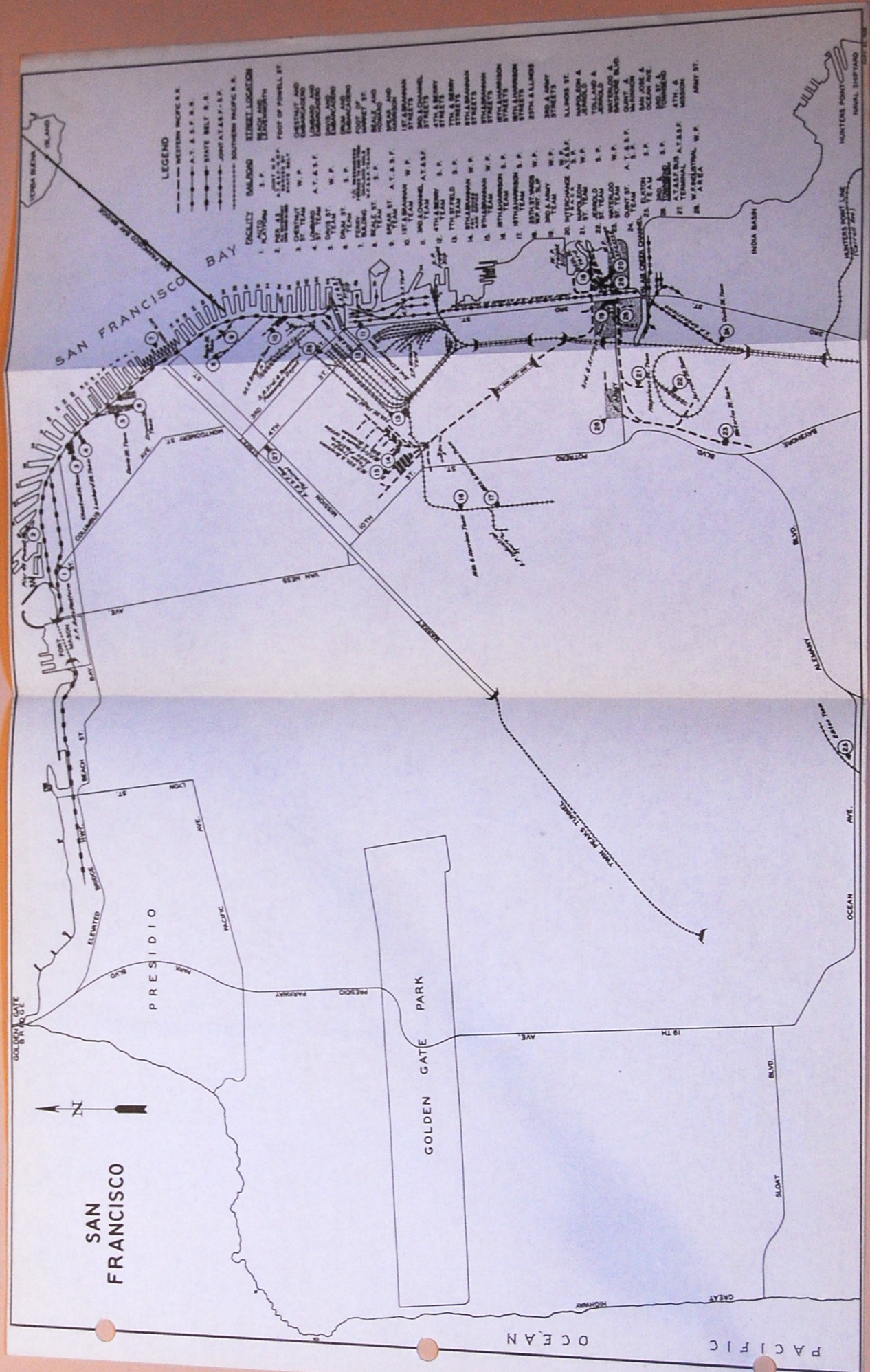
50. BANCROFT--S. N.

Philip Bancroft; fruit shipper

51. WALNUT CREEK--S. N. and S. P. (No Interchange) Mr. W. C. Scheuer, Agent (SN)

Contra Costa Walnut Growers Assn.
Walnut Creek Canning Company

52. LAFAYETTE--S. N.



SAN FRANCISCO TERRITORY

53. SAN FRANCISCO -- W. P., SANTA FE, S. P., STATE BELT Mr. A. Murphy, Agent (WP)

Note: All industries shown and listed under Items Nos. 53 through 61 San Francisco are within the reciprocal switching limits.

Many hundreds of firms with national reputations have established their western headquarters here, and some their national headquarters and general offices. For this reason a very large percentage of the traffic which is controlled by firms with offices in San Francisco moves to and from points outside the city. Among others, the following are firms whose offices are located in San Francisco and who ship and receive practically all of their traffic at points outside the city:

California Packing Corporation
Libby, McNeill & Libby
Standard Oil Company of California
Shell Oil Company
Tidewater Associated Oil Company
Union Oil Company of California
Crown Zellerbach Corporation
California & Hawaiian Sugar Refining Corp.
Dole Sales Company
Rosenberg Bros. & Company
El Dorado Oil Works
Fibreboard Products Inc.
Continental Can Company
Columbia-Geneva Division, U. S. Steel Co.
Pabco Products, Inc.
Petri Wine Company

Also located in San Francisco are numerous brokers selling canned goods, lumber, dried fruit, grain, etc.

San Francisco is known throughout the world for its excellent harbor. There are eighteen miles of ship-berthing space on its waterfront extending from the northerly point of the peninsula at Fort Mason to Islais Creek on the south. The piers are numbered as follows: Odd numbers for those north of the Ferry Bldg. and even numbers for those to the south.

The wide street adjacent to the waterfront is known as The Embarcadero. This entire area, including the piers, is owned by the State of California and is operated through its Board of Harbor Commissioners. This Board also operates the State Belt Railroad which owns 67 miles of trackage serving the piers and facilities of the San Francisco waterfront and about 150 industries located on State property and land adjacent thereto. All terminal lines have access to the switching facilities operated by the State Belt Railroad.

54. HARBOR INDUSTRIES AND TERMINAL RAILROAD FACILITIES -- STATE BELT RR.

- (A-1) Southern Warehouse -- used for storage preparation of new automobiles
- (A-2) Ghirardelli Chocolate Co.; chocolate mfg.

54. (Continued)

- (B-1) Davis Hardwood Company; wholesalers of hardwood
- (B-2) Haslett Warehouse Company; general storage
- (B-3) Southern Pacific Auto Dock; Made available to other S. F. Terminal lines by S. P. at premium switch. Majority of San Francisco automobile dealers take delivery of their cars at this facility.
- (B-4) Coast Grocery Company; wholesale grocers
- (B-5) Libby, McNeill & Libby; general Pacific Coast Offices, local distribution warehouse
- (B-6) Habenicht & Howlett, Inc.; glass
- (B-7) Simmons Company; mattress mfg.
- (B-8) Anderson--Smith Milling Co.; grain and feed
- (B-9) Foreign Trade Zone, Pier 45; Operated by State Harbor Board as zone where import merchandise may be held, repacked, fabricated, etc., in bond without payment of customs duties until reshipped.
- (B-10) Powell Street Car Ferry Slip, Pier 43; This car ferry slip is used by the Western Pacific, Santa Fe, and Northwestern Pacific for handling cars barged across San Francisco Bay when to or from piers, team tracks, and industries served by State Belt Railroad.
- (B-11) State Belt Railroad Storage Tracks
- (B-12) Otis Elevator Company; elevators
- (B-13) Purity Stores, Inc.; main office and warehouse. Operate independent chain stores throughout Northern California.
- (B-14) Fibreboard Products Inc.; general offices and local distribution warehouse.
- (B-15) A. T. & S. F. Lombard Street Auto Platform. Available to other S. F. terminal lines at premium switch.
- (B-16) (1) Western Pacific Waterfront Office
(2) Western Pacific Chestnut Street Yard--team track, including depressed track and storage tracks.
- (B-17) Dodd Warehouse Company; distribute pool cars of merchandise from Chestnut Street shed.
- (B-18) Globe Mills; flour and grain
- (B-19) Turner Whittell Warehouse; general storage and distribution
- (B-20) Merchants Ice & Cold Storage Company; storage and distribution of perishable products.

54. (Continued)

- (C-1) Abbott Laboratories; pharmaceutical products
- (C-2) Western Pacific Davis Street Team Track -- This team track is located adjacent to the Southern Pacific Drumm Street team track and is commonly confused to the extent that many shippers will designate Drumm Street delivery, which requires an S. P. line haul, whereas Western Pacific can actually make same delivery on the adjacent Davis Street team track.
- (C-3) Southern Pacific Drumm Street Team Track
- (C-4) Haas Bros.; beer distribution warehouse (Schlitz, Olympic)
- (C-5) Planters Nut and Chocolate Company; new warehouse under construction
- (C-6) Free Market Spur
- (C-7) J. A. Folger Company; coffee roaster
- (C-8) J. A. Clark Warehouse; pool car distribution
- (C-9) J. A. Clark Warehouse; pool car distribution
- (C-10) Southern Pacific Beale Street Team Tracks
- (C-11) California Packing Corporation; general office
- (C-12) U. S. Marine Corps Warehouses; supplies. The headquarters and office of the Commanding General are at 100 Harrison Street.
- (C-13) Hills Bros.; coffee roaster
- (C-14) Pabst Sales, Bigelow Sanford Carpet Co., Firestone Tire & Rubber Co.
- (C-15) Santa Fe Spear Street Team Tracks
- (C-16) State Belt Storage Yard
- (C-17) Pier No. 36; used as an alternate barge slip by Western Pacific, Santa Fe and Northwestern Pacific when conditions require
- (C-18) Western Pacific First and Brannan Streets Team Tracks including depressed track and ramp for unloading end-door cars. Pacific & Atlantic Shippers occupy Western Pacific owned shed. Also, Haslett Warehouse Company distribute pool cars from here. In addition, San Francisco Warehouse Co. occupy Western Pacific owned shed and distribute pool cars.
- (C-18) Southern Pacific Interchange with State Belt; All Western Pacific, Santa Fe and Northwestern Pacific cars for San Francisco delivery are handled by barge across the Bay. However, the Southern Pacific bring all their cars from the Oakland side around the southern part of the Bay over their Dumbarton Bridge, thence north on the peninsula to the Bayshore Yards.

54. (Continued)

(D-1) Tilden Warehouses, also served by SP; Tenants include International Cellucotton Products Co., Seiberling Tire & Rubber Co., Bayer Co., Hershey Chocolate Co., and Johnson Wax Co.

(D-2) Tiedemann & McMorran; wholesale grocers

55. DOWNTOWN INDUSTRIAL AREA -- W. P.

(A-1) Gilmore Steel Company; steel products.

(A-2) P. E. O'Hair Company; plumbing supplies.

(A-3) Blake, Moffitt & Towne (8th & Brannan Sts.); paper products.

(A-4) Western Pacific Outbound Freight Shed; portions leased to Flynn Forwarding Company and Los Angeles Wholesale Institute, freight forwarders.

(A-5) Western Pacific Inbound Freight Shed; portions leased to Western Transportation Company and Merchants Shippers Association; freight forwarders.

(A-6) Independent Paper Stock Company (Subsidiary of Fibreboard Products Inc.)

(A-7) Commercial Track No. 1 (team)

(A-8) Western Pacific Local Freight Office; A. P. Murphy, Agent.

(A-9) W. P. Auto Platform.

(A-10) W. P. Gantry Crane and W. P. Team Tracks.

(A-11) Hiram Walker & Sons Co.

(A-12) W. P. Team and Pit Tracks.

(A-13) Arnstein Carpet Company

(A-14) W. P. Tracks continue up Ninth Street to Folsom Street, approximately two blocks away, serving McCormack & Co., J. N. Ceazan Co., Mueller Brass Co., O. Casperson & Son, John Wyeth & Co., and Whitehall Pharmacal Co.

(A-15) Robertson Drayage Company, Inc. (A-B-C Transfer & Storage Co.) distribute pool cars.

(A-16) W. J. Lancaster Co.; household appliances.

(A-17) Stauffer Chemical Company

(A-18) Sloss & Brittain; wholesale hardware.



THE WESTERN PACIFIC RAILROAD CO.
SAN FRANCISCO
MAP SHOWING
WESTERN PACIFIC
PROPERTY
ISLAIS CREEK DISTRICT
OFFICE OF CHIEF ENGR. SAN FRANCISCO
JULY 10, 1932

Nº 1

- (A-19) Westinghouse Electric Supply Co.
- (A-20) L. H. Butcher Company; industrial chemicals.
- (A-21) W. P. Main line from 8th & Brannan area to 25th St. Yard.
- (A-22) H. R. Basford Company; household appliances.
- (A-23) C. J. Worth Drayage Co. - Western Freight Association; distribute pool cars.
- (A-24) Frank Edwards Company; household appliances.
- (A-25) Western Can Company (subsidiary of M. J. B. Co.)
- (A-26) Carley & Hamilton Co.; distribute pool cars.
- (A-27) Chase & Sanborn (subsidiary of Standard Brands) coffee roasters.
- (A-28) Dwight Edwards Company (subsidiary of Safeway Stores); coffee roasters.

56. THIRD STREET INDUSTRIAL AREA -- S. P.

- (A-1) Universal Carloading & Distributing Company and Acme Fast Freight, Inc. (SP)
- (A-2) United Fruit Company Banana Terminal (SP)
- (A-3) Grocers' Terminal (SP); tenants include Haas Bros., Rathjen Bros., S&W Fine Foods, and their subsidiary, Equitable Cash Grocery; and Walkup Drayage; general storage.
- (A-4) China Basin Santa Fe Freight Shed; tenants include Republic Carloading, Western Carloading, National Carloading, International Carloading, and Western Transportation Co.
- (A-5) Illinois Street Franchise Track; Located on Illinois Street, between 16th and Islais Creek, and is jointly owned by the S. P. and Santa Fe, being operated three years by Santa Fe and the following three years by S. P. Firms served are: Bethlehem Steel Co., American Can Co., California Barrel Co., Walkup Drayage Co., and Shell Oil Company. Participation in this Illinois Street Franchise Track is open to the Western Pacific if such action should become desirable.
- (A-6) Southern Pacific Mission Bay Yard; switch and storage yard; roundhouse.
- (A-7) Ocomo Cold Storage Company (SP)

57. THIRD AND ARMY STREETS INDUSTRIAL AREA -- W. P.

- (A-1) Cleveland Wrecking Company
- (A-2) Crown Products Company (Lady's Choice Foods)

- (A-3) Western Pacific Main Line -- this line runs from the 25th Street yard through Tunnel No. 1 to Main Freight Depot at 8th & Brannan Streets.
- (A-4) Leo J. Meyberg Company warehouse; household appliances.
- (A-5) Western Pacific Industrial Sites. Parcel No. 3 as shown on map comprises about 20 acres of filled land and 25 acres of tideland to be reclaimed. Arrangements being made to locate General Tire and Rubber Company on Marin Street between Michigan and Illinois Streets.
- (A-6) Western Pacific 25th Street Barge Slip and Yard Office. All Western Pacific cars handled between Oakland and San Francisco, with exception of those that go to the Belt at Powell Street or Pier 36, are handled over the car barge facilities at 25th Street.
- (A-7) Interchange Tracks Nos. 10 and 11; these connect our yard with the Illinois Street track, over which cars are interchanged with the Santa Fe and Southern Pacific.
- (A-8) Western Pacific Industrial Sites. Parcel No. 2 on map, approximately 20 acres of Industrial property now mostly occupied on a temporary basis by Federal Housing.
- (A-9) F. E. Booth Company, sardine cannery and fish reduction plant.
- (A-10) W. P. Third and Army Streets Team Track.
- (A-11) U. S. Plywood Corporation
- (A-12) Sears Roebuck & Co., warehouse.
- (A-13) Cargill Company, copra and cocoanut oil and meal plant.
- (A-14) Soule Steel Company; steel distributors and fabricators; served by S. P.
- (A-15) Heieck & Moran; wholesale plumbing supplies.
- (A-16) Federated Metals Co., division of American Smelting & Refining Co.
- (A-17) Hood Rubber Co., division of B. F. Goodrich Co.
- (A-18) John Sexton Company; wholesale grocers.

58. BUTCHERTOWN INDUSTRIAL AREA -- S. P.

- (A-1) Islais Creek Grain Terminal (SP)

- (A-2) Various abattoirs and meat packers including H. Moffatt & Co., William Taaffe & Co., James Allen & Sons and Alpert Packing Co. (do not confuse with South San Francisco packers -- see item 62)
- (A-3) U. S. Marine Corps Islais Creek Base. This large base contains approximately 80 acres and is the principal supply base for the Pacific Area. Served by WP and SP. Switching within the base is performed by Marine Corps locomotives.

59. LOOMIS--BARNEVELD STREETS INDUSTRIAL AREA--W.P.

- (A-1) Geo. A. Hormel & Co.; meat products.
- (A-2) International Sales Company; hot air house heating furnaces.
- (A-3) Western Pacific Napoleon Street Team Track.
- (A-4) San Francisco Warehouse Co. (Napoleon Street unit); general warehousing. Some principal accounts are American Tobacco Company, Liggett & Myers, Brown & Williamson and Mars Candy Company.
- (A-5) Higgins Lumber Company; general lumber supplier.
- (A-6) Coast-Dakota Flour Company.
- (A-7) Consolidated Milling Company.
- (A-8) Hawley Forge Co.
- (A-9) Monterey Distributing Company; Hamm's Beer distributor.
- (A-10) Pacific Container Company.
- (A-11) Golden Brand Bottling Company, distributors of various eastern beers.
- (A-11) McKimmon Street spur serving U. S. Marine Corps Islais Creek Base. (See Item 58 (A-3) above.)
- (A-12) A. R. Reid Company; wrap pipe in transit.
- (A-13) Coast Pipe & Supply Company
- (A-14) Mosaic Tile Company
- (A-15) W. P. Waterloo Team Track (2 cars)
- (A-16) City Coal Co. (California Toro Co.) building materials; gardening equipment; mowers, etc.
- (A-17) American Seating Co.; theatre and school furniture.
- (A-18) Kaemper-Barrett Warehouse (under construction); household appliances; will be served by W. P. spur.

61. VISITACION VALLEY INDUSTRIAL AREA--S. P.

- (A-1) Southern Pacific Bayshore Yard
- (A-2) Schlage Lock Company; locks and builder's hardware
- (A-3) Western Crown Cork & Seal Corporation
- (A-4) Consolidated Chemical Industries

SOUTH SAN FRANCISCO

This area is served by S. P., is within the San Francisco switching limits.

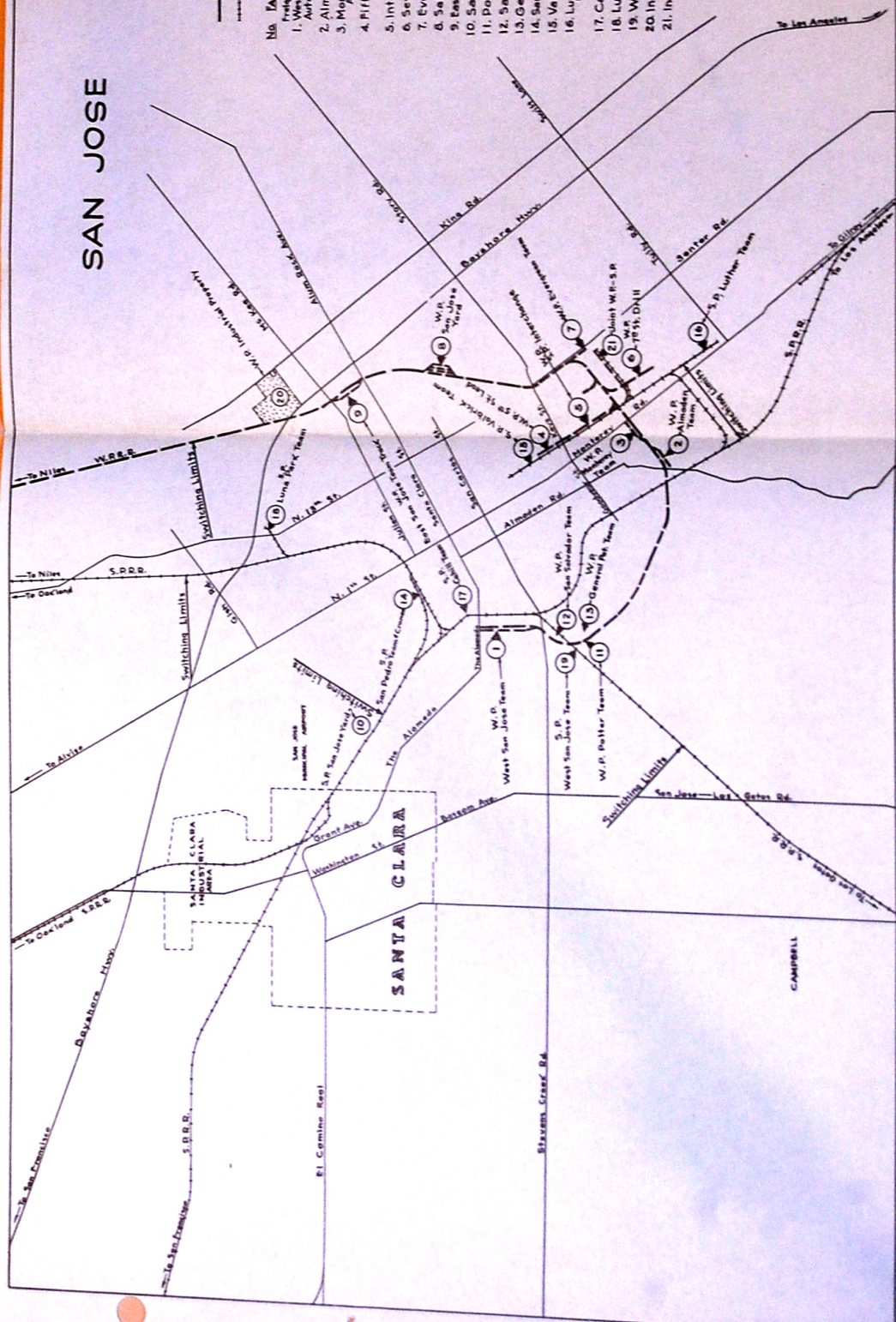
62. (A-1) Consolidated Western Steel Corp., Division United States Steel Company
(A-2) Dubuque Packing Company; meat products
(A-3) Bethlehem Pacific Coast Steel Company; steel products
(A-4) Metal and Thermit Corporation; scrap metals
(A-5) Armour Packing Company
(A-6) Swift & Company
(A-7) W. P. Fuller Company; paint products
(A-8) Marine Magnesium Company; chemicals
(A-9) Stewart Warner Company; electrical appliances
(A-10) Bucyrus-Erie Company; building machinery
(A-11) Round California Chain Company; chain and cable

End of San Francisco Switching Limits

63. ENROUTE TO SAN JOSE (Area served by S. P.)

- (A-1) A. D. Schader Company; railroad construction
(A-2) San Francisco International Airport
(A-3) General Services Administration Warehouses, San Bruno
(A-4) National Carbon Company, San Bruno
(A-5) Pacific Portland Cement Company Plant; manufacture cement from oysters taken from bottom of bay, Redwood City
(A-6) Port of Redwood City; principal exports are bulk cement, and bulk salt of Leslie Salt Co. Handle petroleum products by barge from bay refineries, and import gypsum rock for Kaiser Company from San Marcus Island off the western coast of Mexico.
(A-7) Leslie Salt Company, Redwood City
(A-8) S. H. Frank Tanning Company, Redwood City
(A-9) Pabco Redwood City Plant; insulating material
(A-10) Dumbarton Highway Bridge
(A-11) Southern Pacific Dumbarton Bridge.

SAN JOSE



LEGEND
 Western Pacific R.R.
 Southern Pacific R.R.

No.	Facility	R.R.	Address
1	Weight Office, Elec. Crane	W.P.	Bush & The Alameda
2	Alameda Ave. Near San Jose Ave.	W.P.	Alameda Ave. Near San Jose Ave.
3	Alameda Ave. Near San Jose Ave.	W.P.	Alameda Ave. Near San Jose Ave.
4	Alameda Ave. Near San Jose Ave.	W.P.	Alameda Ave. Near San Jose Ave.
5	Alameda Ave. Near San Jose Ave.	W.P.	Alameda Ave. Near San Jose Ave.
6	Alameda Ave. Near San Jose Ave.	W.P.	Alameda Ave. Near San Jose Ave.
7	Alameda Ave. Near San Jose Ave.	W.P.	Alameda Ave. Near San Jose Ave.
8	Alameda Ave. Near San Jose Ave.	W.P.	Alameda Ave. Near San Jose Ave.
9	Alameda Ave. Near San Jose Ave.	W.P.	Alameda Ave. Near San Jose Ave.
10	Alameda Ave. Near San Jose Ave.	W.P.	Alameda Ave. Near San Jose Ave.
11	Alameda Ave. Near San Jose Ave.	W.P.	Alameda Ave. Near San Jose Ave.
12	Alameda Ave. Near San Jose Ave.	W.P.	Alameda Ave. Near San Jose Ave.
13	Alameda Ave. Near San Jose Ave.	W.P.	Alameda Ave. Near San Jose Ave.
14	Alameda Ave. Near San Jose Ave.	W.P.	Alameda Ave. Near San Jose Ave.
15	Alameda Ave. Near San Jose Ave.	W.P.	Alameda Ave. Near San Jose Ave.
16	Alameda Ave. Near San Jose Ave.	W.P.	Alameda Ave. Near San Jose Ave.
17	Alameda Ave. Near San Jose Ave.	W.P.	Alameda Ave. Near San Jose Ave.
18	Alameda Ave. Near San Jose Ave.	W.P.	Alameda Ave. Near San Jose Ave.
19	Alameda Ave. Near San Jose Ave.	W.P.	Alameda Ave. Near San Jose Ave.
20	Alameda Ave. Near San Jose Ave.	W.P.	Alameda Ave. Near San Jose Ave.
21	Alameda Ave. Near San Jose Ave.	W.P.	Alameda Ave. Near San Jose Ave.

SAN JOSE TERRITORY

64. ENROUTE TO SAN JOSE (Continued) Area served by S. P.

- (B-1) Westinghouse Electric Co., Sunnyvale; motors, engines
Schuckl & Company, Sunnyvale; canner
Libby, McNeill & Libby, Sunnyvale; canner
- (B-2) Moffett Field, U. S. Navy and National Advisory Committee for Aero-
nautics. Switching on the base is done by Government power and crews.

65. SANTA CLARA--S. P. (Located outside San Jose switching limits)

Owens Corning Fiberglass; insulating material
Keasby-Mattison; asbestos covering
Wire Specialties Co.; woven wire fencing
California Walnut Growers Assn.; walnuts
Rosenberg Brothers; dried fruit
Security Warehouse and Cold Storage; perishable food products storage
Santa Clara Frosted Foods; frozen foods
Pratt Low Preserving Co.; canned goods
Owens Illinois Glass Co.; metal cap plant
American Home Foods; present closed
Food Machinery Ordnance Division

66. SAN JOSE--W. P. and S. P. Mr. G. D. Keyes, Agent (WP)

Note: All industries shown and listed in San Jose are within the
reciprocal switching limits.

(A-1) Central Industrial Area served by (SP)

Tay Holbrook; plumbing supplies
Building Material Distributors; building materials
Muirson Label Co.; labels
Richmond Chase Co.; canned and frozen foods
Joseph George, Inc.; liquor distributor
Southern Pacific viaduct team track

(A-2) Western Pacific freight terminal facilities; station team track,
auto unloading platform, gantry crane

Proposed site for Traffic Department and Passenger Ticket Office

National Carloading Corporation)	Forwarders located in our freight
Republic Carloading Co.)	shed facility.
Pacific & Atlantic Shippers)	

(A-3) West San Jose Industrial Area (WP & SP)

California Packing Corporation Plant No. 5 (WP & SP)
John C. Maurer, perishable shipper (WP)
Union Ice Company; frozen food storage (WP)
Frostcraft Packing Co.; frozen food packer (WP)

66. (A-3) (Continued)

Universal Carloading Co. (WP)
Merchant Shippers (WP)
Williams & Russo; building materials (WP)
Cheim Lumber Company; lumber (WP & SP)
California Packing Corporation Plant No. 3 (WP & SP)
Stapleton-Spence Packing Co.; canned prunes (WP)
Regal Pale Distributing Co.; Schlitz Beer (WP)
Floor Service Company; flooring (WP)
San Salvador Team Track (WP)
Borchers Brothers; building materials (WP)
Abinante & Nola; dried fruit (WP)
Hershel California Fruit Products; canned goods (WP & SP)
U. S. Products Corporation; canned goods (SP)

(B-1) Southern Industrial Area (WP & SP)

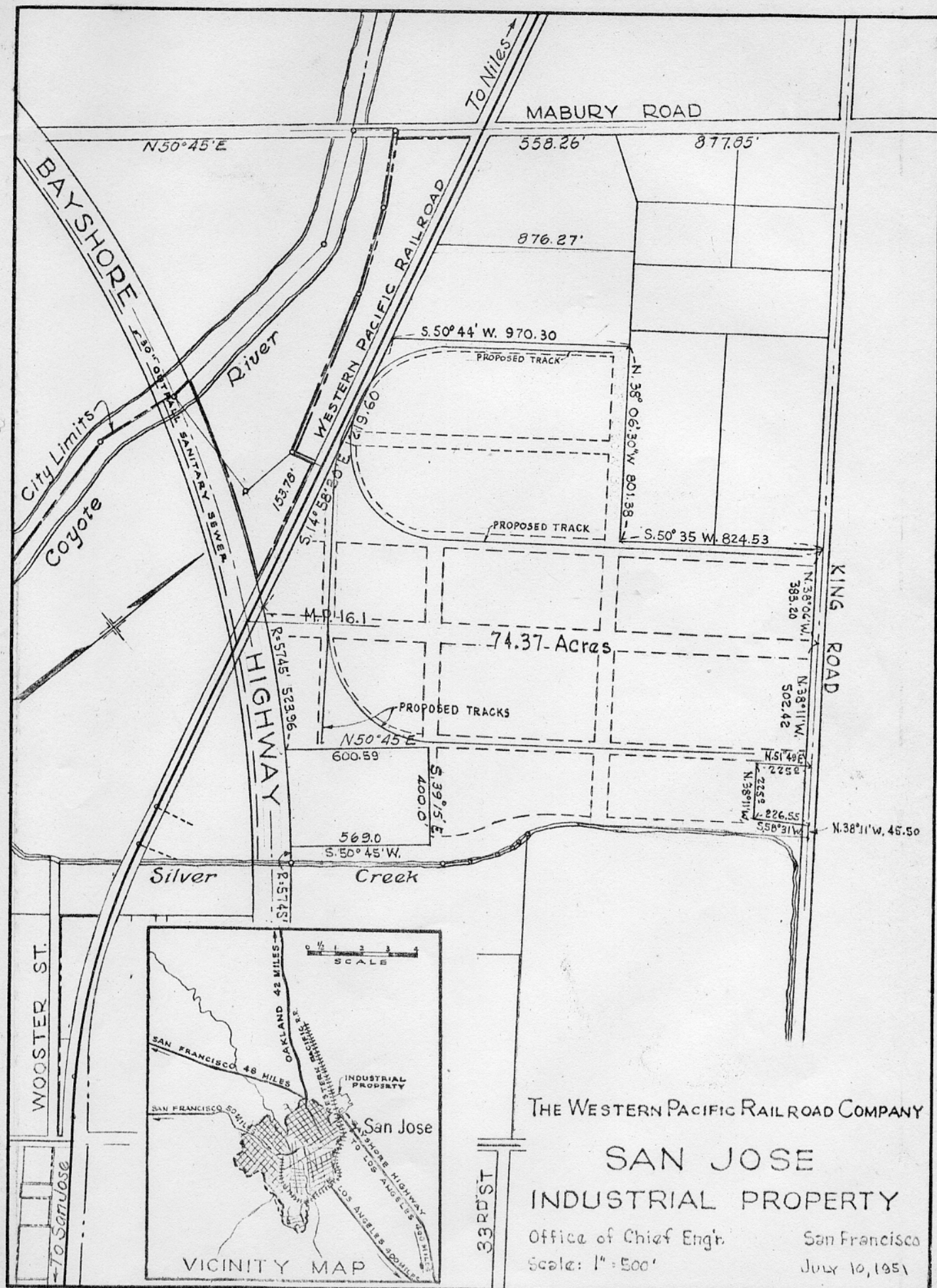
Barron Gray Packing Company (Divn. Dole Sales Company) new canned goods shipping warehouse served exclusively by W. P.
American Can Company (WP) (SP)
WP - SP Interchange
Sun Garden Packing Co.; canners (WP and SP)
Mayfair Packing Co.; dried fruit (WP and SP)
Monterey Road Team Track (WP)
Almaden Road Team Track (WP)
International Mineral & Chemical Corporation, Amino Products Div. (SP)
General Electric Corp.; small motors (SP)
Mayfair Packing Company plant; dried fruit (under construction)
W. P. 7th Street lead taps new industrial property served excl. by W. P.
Langendorf Baking Company; bakery (WP & SP)
California Prune & Apricot Growers Association Plant No. 7; dried fruits (WP & SP)
Beech Nut Packing Company; baby foods (WP & SP)
Western Pacific Senter Road (Evergreen) Team Track.

(B-2) Western Pacific San Jose Yard and Roundhouse Facilities. Diesel switch engines operating in this yard are equipped with two-way radio control.

D'Arrigo Bros. of California; perishables (WP)
Jewel Tea Company (WP)

(B-3) East San Jose Industrial Area--(WP)

28th Street or East San Jose Team Tracks
Western Pacific packing sheds Nos. 1 and 2; leased to Levy Zentner Co.; celery shippers.
Cobbledick Kibbe Glass Company
San Jose Steel Company; bridge and tank work
Chevy Chase Canning Company, Division of Air Line Foods of New York



(C-1) Lenfest Industrial Tract (Wp)

In 1951, the railroad purchased 73 acres of highly desirable acreage just outside the north city limits of San Jose, as shown on Map No. 5. This land is strategically located fronting on the Freeway to San Francisco and on a paved county road. It is served or close to all utilities and work is progressing on installation of sewers, roads, water mains and trackage. It is zoned for high class industrial use.

(C-2) Western Pacific San Jose Stock Yards

Located on Mabury Road; rail and truck loading accommodations. Kaufmann Meat Company; feed lot

(C-3) Northern Industrial Area (Sp)

Modern Ice & Cold Storage; dry storage and cold storage
California Packing Corporation Plant No. 4; canned goods storage
California Packing Corporation Plant No. 39; pickle plant
Santa Clara Packing Co.; canners
Tri Valley Packing Co.; canners
Continental Can Company

67. MILPITAS--W. P. and S. P. (No Interchange)

The Western Pacific own 316 acres of industrial land outlined on Map No. 4. Can also be served by S. P. if necessary. Located near proposed Oakland-San Jose Freeway and San Jose-San Francisco Freeway. All utilities are available.

68. CURTNER--W. P.

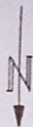
Harbison Walker Company; refractory brick

69. IRVINGTON--W. P. and S. P. (No Interchange)

70. CENTERVILLE--S. P.

F. E. Booth Company; canners

OAKLAND



TO RICHMOND

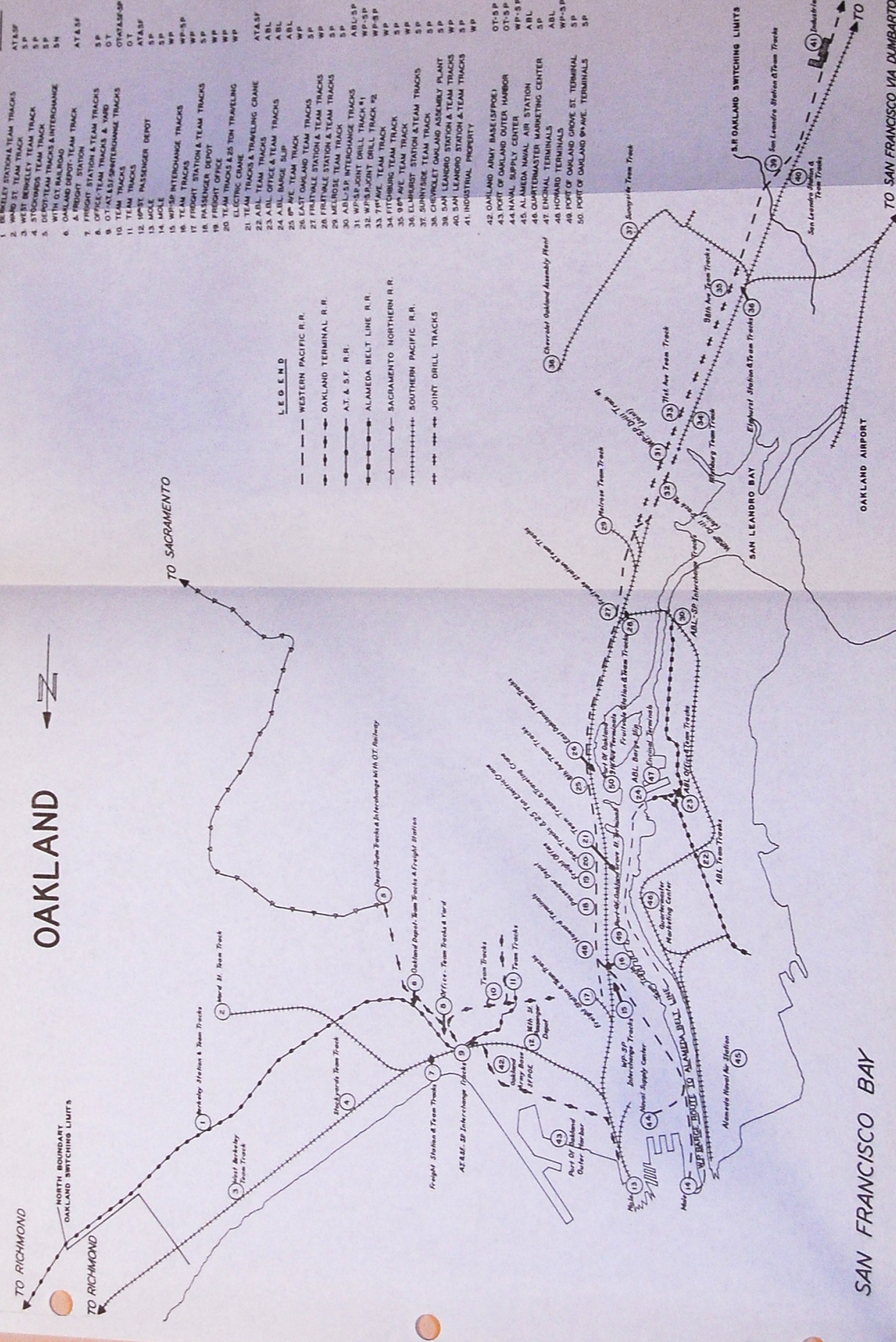
TO RICHMOND

TO SACRAMENTO

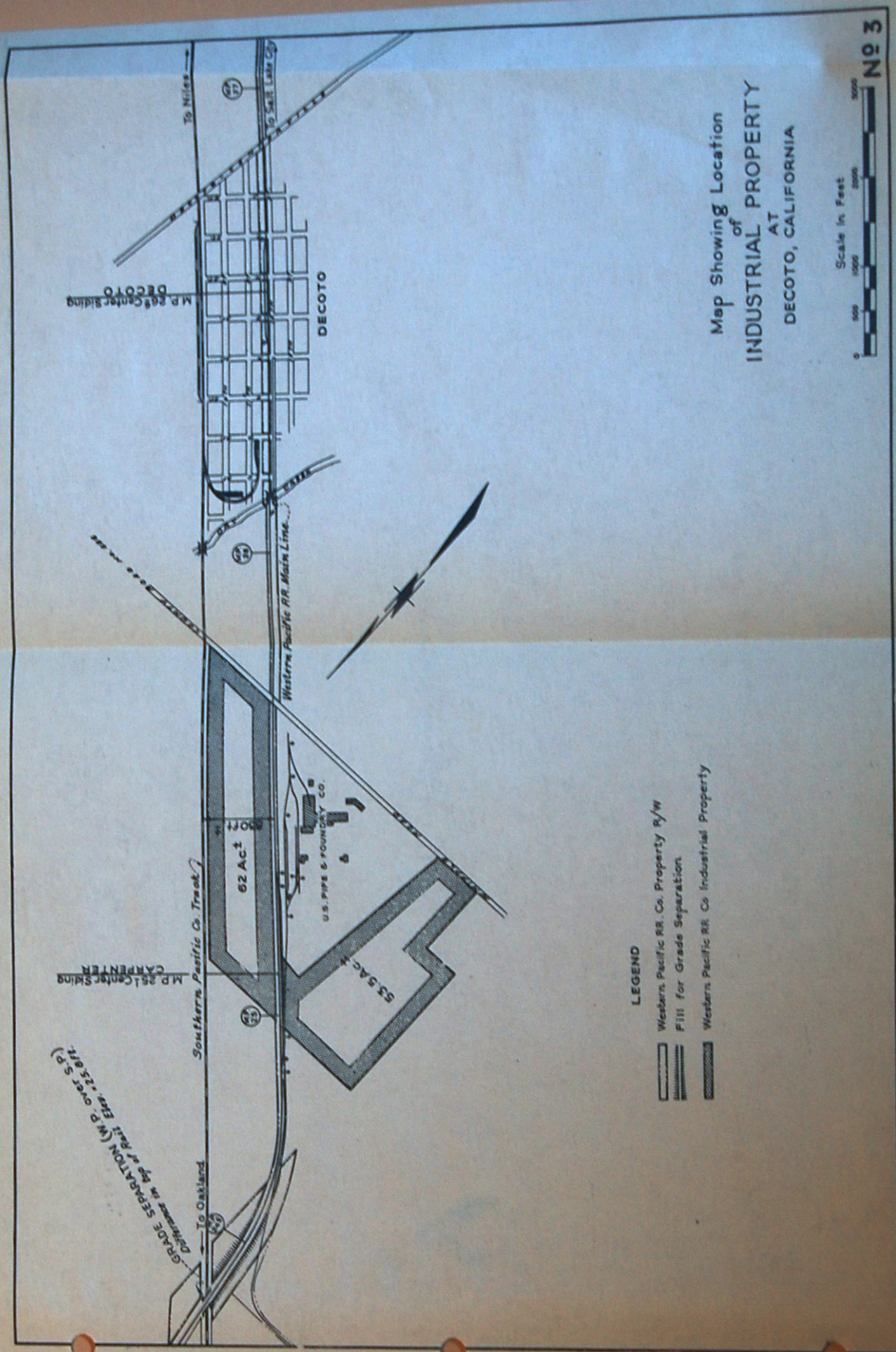
FACILITY	STREET LOCATION
1. BUREAU OF RAILROADS	UNIVERSITY AVE & WEST ST
2. WEST BUREAU TEAM TRACK	UNIVERSITY AVE & WEST ST
3. WEST BUREAU TEAM TRACK	UNIVERSITY AVE & WEST ST
4. WEST BUREAU TEAM TRACK	UNIVERSITY AVE & WEST ST
5. WEST BUREAU TEAM TRACK	UNIVERSITY AVE & WEST ST
6. WEST BUREAU TEAM TRACK	UNIVERSITY AVE & WEST ST
7. WEST BUREAU TEAM TRACK	UNIVERSITY AVE & WEST ST
8. WEST BUREAU TEAM TRACK	UNIVERSITY AVE & WEST ST
9. WEST BUREAU TEAM TRACK	UNIVERSITY AVE & WEST ST
10. WEST BUREAU TEAM TRACK	UNIVERSITY AVE & WEST ST
11. WEST BUREAU TEAM TRACK	UNIVERSITY AVE & WEST ST
12. WEST BUREAU TEAM TRACK	UNIVERSITY AVE & WEST ST
13. WEST BUREAU TEAM TRACK	UNIVERSITY AVE & WEST ST
14. WEST BUREAU TEAM TRACK	UNIVERSITY AVE & WEST ST
15. WEST BUREAU TEAM TRACK	UNIVERSITY AVE & WEST ST
16. WEST BUREAU TEAM TRACK	UNIVERSITY AVE & WEST ST
17. WEST BUREAU TEAM TRACK	UNIVERSITY AVE & WEST ST
18. WEST BUREAU TEAM TRACK	UNIVERSITY AVE & WEST ST
19. WEST BUREAU TEAM TRACK	UNIVERSITY AVE & WEST ST
20. WEST BUREAU TEAM TRACK	UNIVERSITY AVE & WEST ST
21. WEST BUREAU TEAM TRACK	UNIVERSITY AVE & WEST ST
22. WEST BUREAU TEAM TRACK	UNIVERSITY AVE & WEST ST
23. WEST BUREAU TEAM TRACK	UNIVERSITY AVE & WEST ST
24. WEST BUREAU TEAM TRACK	UNIVERSITY AVE & WEST ST
25. WEST BUREAU TEAM TRACK	UNIVERSITY AVE & WEST ST
26. WEST BUREAU TEAM TRACK	UNIVERSITY AVE & WEST ST
27. WEST BUREAU TEAM TRACK	UNIVERSITY AVE & WEST ST
28. WEST BUREAU TEAM TRACK	UNIVERSITY AVE & WEST ST
29. WEST BUREAU TEAM TRACK	UNIVERSITY AVE & WEST ST
30. WEST BUREAU TEAM TRACK	UNIVERSITY AVE & WEST ST
31. WEST BUREAU TEAM TRACK	UNIVERSITY AVE & WEST ST
32. WEST BUREAU TEAM TRACK	UNIVERSITY AVE & WEST ST
33. WEST BUREAU TEAM TRACK	UNIVERSITY AVE & WEST ST
34. WEST BUREAU TEAM TRACK	UNIVERSITY AVE & WEST ST
35. WEST BUREAU TEAM TRACK	UNIVERSITY AVE & WEST ST
36. WEST BUREAU TEAM TRACK	UNIVERSITY AVE & WEST ST
37. WEST BUREAU TEAM TRACK	UNIVERSITY AVE & WEST ST
38. WEST BUREAU TEAM TRACK	UNIVERSITY AVE & WEST ST
39. WEST BUREAU TEAM TRACK	UNIVERSITY AVE & WEST ST
40. WEST BUREAU TEAM TRACK	UNIVERSITY AVE & WEST ST
41. WEST BUREAU TEAM TRACK	UNIVERSITY AVE & WEST ST
42. WEST BUREAU TEAM TRACK	UNIVERSITY AVE & WEST ST
43. WEST BUREAU TEAM TRACK	UNIVERSITY AVE & WEST ST
44. WEST BUREAU TEAM TRACK	UNIVERSITY AVE & WEST ST
45. WEST BUREAU TEAM TRACK	UNIVERSITY AVE & WEST ST
46. WEST BUREAU TEAM TRACK	UNIVERSITY AVE & WEST ST
47. WEST BUREAU TEAM TRACK	UNIVERSITY AVE & WEST ST
48. WEST BUREAU TEAM TRACK	UNIVERSITY AVE & WEST ST
49. WEST BUREAU TEAM TRACK	UNIVERSITY AVE & WEST ST
50. WEST BUREAU TEAM TRACK	UNIVERSITY AVE & WEST ST

LEGEND

- WESTERN PACIFIC R.R.
- OAKLAND TERMINAL R.R.
- AT & SF R.R.
- ALAMEDA BELT LINE R.R.
- SACRAMENTO NORTHERN R.R.
- SOUTHERN PACIFIC R.R.
- JOINT DRILL TRACKS



SAN FRANCISCO BAY



OAKLAND TERRITORY

71. NILES--W. P. and S. P. (No Interchange) Mr. L. F. Perkins, Agent (WP)

All traffic except perishable handled by Oakland Agency at this station

H. J. Kaiser (Gravel Plant) WP)
The Kraftile Co. (SP)

Note: About one mile East of W. P. Niles Station is located a wye at which
W. P. branch line takes off to San Jose.

72. PABRICO--W. P. and S. P.

Pacific States Steel Corporation (WP & SP)
American Forge Company (WP & SP)

73. CARPENTER--W. P.

United States Pipe and Foundry Company

In 1950, the Company purchased 196 acres of land at Carpenter (Decoto) and subsequently sold 71 acres to the United States Pipe and Foundry Company, which is now operating its new plant. Approximately 125 acres are still available as shown on Map No. 3, 62 acres of which can be served jointly by the W. P.--S. P. Property is located on good county road connecting with two main highways and in the near future will be within two miles of the new Oakland--San Jose Freeway. Water can be supplied through the drilling of wells, or from the City of Hayward, or Citizen's Water Company of Niles. Supply from the latter two sources would have to be negotiated. Electric power and gas are available.

74. DECOTO--W. P. and S. P. (NO Interchange)

J. L. Stevenson; vegetable shippers (WP)
Alaco Preserving Company; canners (SP)

75. HAYWARD--W. P. and S. P. (No Interchange) Mr. W. S. Starr, Agent (WP)

Hayward Poultry Producers Association; grain and feed (WP)
Moe Felberbaum; produce (WP)
Western Pacific Team Track
Hunt Foods, Inc.; canners (SP)

76. SAN LEANDRO--W. P. and S. P. (No Interchange) Mr. F. G. Hardwick, Agent (WP)

Just east of San Leandro, the Company owns approximately 13 acres since locating the Golden Grain Macaroni Company and Budget Pack in the tract. This property is shown on Map No. 2 and is served by all utilities.

General Foods Corporation (WP & SP)
Golden Grain Macaroni Company (WP)
Budget Pack Company (WP)

76. (Continued)

Hudson Lumber Company (WP)
Caterpillar Tractor Company (WP & SP)
California Packing Corporation Plant No. 8 (WP&SP)

77. MULFORD--SAN LEANDRO INDUSTRIAL AREA--S. P.

This district is a recently developed industrial area outside the Oakland-San Leandro switching zone, served exclusively by the S. P. Western Pacific can participate in traffic to and from this district via California Junctions on trans-continental traffic.

Peterson Tractor & Equipment Company
Tea Garden Products Company
Lucky Stores Warehouse
St. Regis Paper Company
Crown Zellerbach Corporation; new paper converting plant now under construction
Lloyd A. Fry Roofing Company
Pioneer Flintkote Company
Republic Supply Company; plumbing supplies
Kellogg Company
Western Wax Paper Division, Crown Zellerbach Corporation
Kaiser Manufacturing Company, aircraft division
Dewey Almy Chemical Company
Chrysler Corporation, Dodge Brothers Assembly Plant
Chrysler Propeller Plant (U. S. Navy)

78. OAKLAND METROPOLITAN AREA*--W. P., S. N., O. T., A. B. L., SANTA FE, S. P.
Mr. J. B. Dillon, Agent, (WP)

*Includes Oakland, Alameda, Emeryville, Berkeley, San Leandro on WP and Fruitvale.

Note: All industries shown and listed in Oakland are within the reciprocal switching limits.

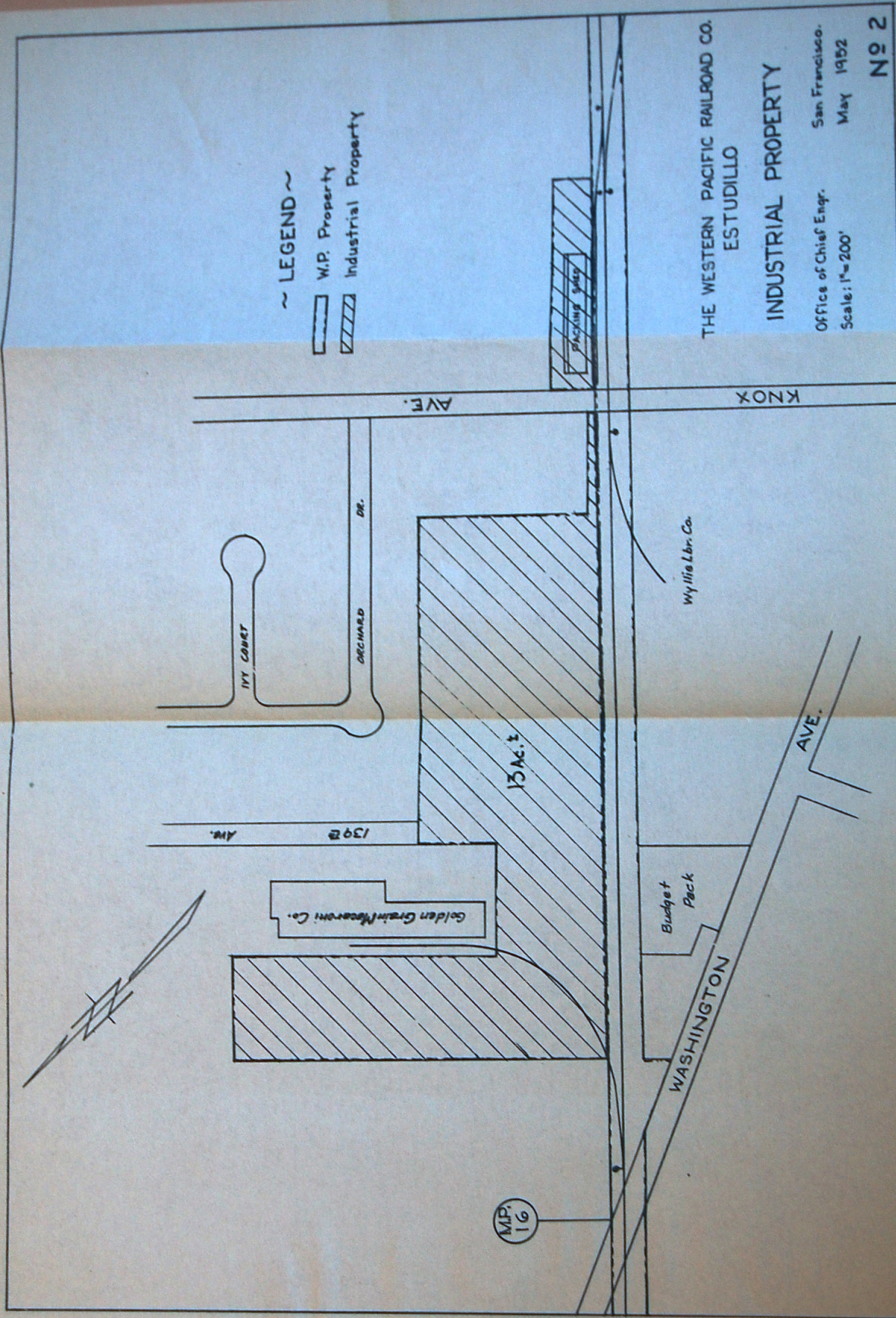
(A-1) 105th Avenue Industrial Area

Homecraft Bakery (WP)
L. A. Young Spring & Wire Co. (WP)
Pacific Port Industries, Inc. (Crate Rite) (WP)

(A-2) Industrial Area, 98th Avenue to 47th Avenue

At this point and extending westerly to 47th Avenue, is located W. P. joint drill track No. 1, serving industries on the north side of San Leandro Blvd. From a point 66th Avenue westerly to 50th Ave. is located S. P. joint drill track No. 2, serving industries on the south side of San Leandro Blvd.

All industries served by either W. P. drill No. 1 or S. P. Drill No. 2 are switched by engines of both lines under the joint drill track switching agreement.



78. (A-2) (Continued)

Dennison Foods
Granny Goose Foods
Western Pacific 98th Avenue Team Track
Standard Brands Incorporated
Gaylord Container Company
Gerber Products Company
Hazel Atlas Glass Company
Montgomery Ward & Company -- 85th Avenue Warehouse
Longview Fibre Company
~~Bluebird Potato Chip Company~~ Peter Paul, Inc.
Sunshine Biscuit Company
McDonough Steel Company
Western Pacific 71st Avenue Team Track
Fruitvale Canning Co.
Springfield Cedar Company
Stokeley Van Camp Inc.
General Electric Company; transformer plant
Continental Can Company
F. M. Ball & Company
Chemical Pigment Company
Pacific Tire & Rubber Company

(B-1) East Oakland Industrial Area--W. P. and S. P.

National Lead Company (SP)
Western Pacific Shed leased to Montgomery Ward Company
Clorox Chemical Company (SP)
American Can Company (SP)
California Packing Corporation Warehouse No. 29 (SP)
Owens Illinois Glass Company (SP)

(B-2) Western Pacific Fruitvale Station Team Track and Auto Unloading Platform Mr. R. E. McElroy, Agent

Art Lagerquist; furniture (WP)
Montgomery Ward & Company (WP)
Spark Stove Company (WP)
Western Glass Company (WP)
Kelvinator (WP)
Jewel Tea Company (WP)
Dallman Company (WP)
California Distributing Company (Better Living); household appliances(WP)
Western Pacific 21st Avenue Team Track
General Mills (WP)
George Bros.; Amheuser-Busch Distributors (WP)
Western Pacific Eighth Avenue Team Track
Westinghouse Electric Supply Company (WP)
Port of Oakland Ninth Avenue Terminal (SP)
Keystone Steel & Wire Company (SP)
National Automotive Fibres Incorporated (SP)
California Cotton Mills (SP)
Ralston Purina Company (SP)

79. ALAMEDA--A. B. L. (Owned jointly by WP & Santa Fe)--S. P.

(A-1) Alameda Belt Line and S. P. Interchange located a few blocks to the left

(A-2) Industries served by A. B. L. exclusively

Kieckhefer Container Company

Stokeley Van Camp, Inc.

California Packing Corporation Plant No. 48

Encinal Terminals

Alameda Belt Barge Slip, Sherman Street Team Tracks, Office and Shops
and Webster Street Team Track

Rosefield Packing Company

U. S. Naval Air Station (Switching within base operated by Government power and crews)

(A-3) Industries served by Southern Pacific

Bethlehem Pacific Coast Steel Corporation

Alameda Medical Depot and Quartermaster Marketing Center (Switching within base is operated by Government power and crews)

80. OAKLAND INDUSTRIAL AREA

(A-1) Following industries in this area:

Universal Carloading Company (SP)

Haas Brothers (SP)

Merchant Shipper's Association (WP)

International Forwarding Company (WP)

Stor-Dor Forwarding Company (WP)

Manufacturer's Distribution Terminal; furniture pool cars (WP)

Bay Plywood Company (WP)

Western Pacific 25 Ton Traveling Electric Crane, team tracks and freight office

John Morrell Company (WP)

Pacific & Atlantic Shippers' Association (WP)

W. P. Fuller Company (WP)

Cudahy Packing Company (WP)

Oakland Plumbing Supply Company (WP)

Haslett Warehouse No. 2 (WP)

Haslett Warehouse No. 1, both dry and cold storage (SP)

(A-2) Western Pacific Passenger Station

Cobbledick Kibbe Glass Company (WP)

Swift & Company (WP)

(A-3) Port of Oakland, Grove Street Terminals (SP)

United States Plywood Company (WP)

80. (Continued)

- (B-1) Howard Terminal; privately operated terminal port facility. They operate their own switch engines. Western Pacific and Southern Pacific have direct interchange.

W. T. Rawleigh Company (WP)

Simplex Manufacturing Company (WP)

Haslett Warehouse Company (pool car distributional terminal (WP)

81. WESTERN PACIFIC OAKLAND TERMINAL FACILITIES

- (A-1) Moore Drydock Company (WP)
Eldorado Oil Works (WP)
Oakland Dock and Warehouse (WP)

(A-2) Western Pacific and Southern Pacific Interchange Tracks

(A-3) First and Adeline Streets Team Track

(A-4) Roundhouse and Shops

(A-5) Commissary Department

(A-6) New Coach Yard; this yard contains service tracks, pits and wash rack for servicing the California Zephyr

(A-7) Yard Office

All diesel switch engines are radio equipped giving Yardmasters direct communication with switch engineer

(A-8) Interchange Track with the Oakland Naval Supply Center

(A-9) Mole

At this point carload traffic destined San Francisco is transferred to barges and transported across San Francisco Bay to either 25th Street or Powell Street Slips. W. P. tugs are radio equipped for two-way communication.

Average time to load barges, 15 minutes.

Average time for barge from Mole to 25th Street, 40 min.

Average time for barge from Mole to Powell Street, 50 min.

Carload traffic to and from Alameda Belt Line is also handled from Mole via W. P. barges; average time 40 minutes.

Inspection of compartmentizer cars.

Sugar Dock--Processed sugar originating at California & Hawaiian Sugar Co., Crockett, California is barged twice weekly by River Navigation Co., transferred into freight car moving W. P.

Three steel storage tanks--vegetable oils

82. OAKLAND TERMINAL INDUSTRIAL AREA-- O. T.

H. C. Capwell Company Warehouse
Kraft Foods Company
Laher Spring & Tire Company
26th & Union Streets Team Track
Cadillac Parts Warehouse (Division of General Motors)
Furst McNess Company
Weinbrenner Shoe Company
Markstein Bros. (Blatz Beer Distributors)
National Biscuit Company, Shredded Wheat Plant
Union Street; proposed route of O. T. Connection with W. P.

83. NAVAL SUPPLY CENTER--W. P. and S. P.

Navy Central Freight Control Office located here. W. P. serves facility from south side with direct interchange to our yard. Switching within base operated by Government power and crews.

84. SOUTHERN PACIFIC MOLE; Terminus of California Zephyr. Ferry to San Francisco

85. OUTER HARBOR INDUSTRIAL AREA--O. T. and S. P.

(A-1) Albers Milling Company
National Container Corporation
Western Vegetable Oil Company Inc.
General Petroleum Corporation

(A-2) Port of Oakland Outer Harbor Terminal

Rosenberg Brothers & Company Inc.
Libby, McNeill & Libby Company

(A-3) San Francisco Port of Embarkation--Oakland Army Base

The Oakland Army Base operate own engines and crews. Maintain facilities for handling cargo direct from cars to vessels.

86. NORTH OAKLAND INDUSTRIAL AREA--SANTA FE and S. P.

National Carloading Company (ATSF)
Heileck & Moran Company (ATSF)
Earl M. Jorgensen Steel Company (ATSF)
Gilmore Steel Company (SP)
Nordstrom Valve (Division of Rockwell Mfg. Co.) (SP)
Harry F. Rathjen Co. (SP); beer
Bay Cities Equipment Co. (SP)
The Merrill Bros Co. (SP); implements
International Harvester Company (SP)
Republic Carloading Company; 40th & San Pablo Avenue; (Santa Fe)

87. OAKLAND TERMINAL RAILWAY--(Jointly owned by W. P. and Santa Fe)

88. SACRAMENTO NORTHERN FORTIETH AND SHAFTER FREIGHT STATION & TEAM TRACKS

Mr. Roy F. Snyder, Agent

This is the western terminus of the Sacramento Northern. Direct interchange is made at this point with the Oakland Terminal Railway.

89. EMERYVILLE INDUSTRIAL AREA (Served by S. P. except as noted)

California Packing Corporation Plant No. 35 (SP & ATSF)
Allis Chalmers Manufacturing Company
Sears & Roebuck Warehouse (ATSF)
Acme Fast Freight Inc.
Judson Steel Corporation
Judson Pacific Murphy Corporation
Sherwin-Williams Company of California
California Container Corporation
Frigidaire Corporation (Div. of General Motors)
General Electric Supply Corporation
U. S. Envelope Company
Pabco Products Inc.; roofing and flooring
Westinghouse Electric Corp.
International Harvester Company (Parts warehouse)
Grimell Company of the Pacific
General Cable Corp.
Sylvania Electric Products Company
Joseph T. Ryerson & Son Inc.; steel products

90. BERKELEY INDUSTRIAL AREA--S. P.

Tay Holbrook Inc.
A. M. Castle & Company
H. J. Heinz Company
San Francisco Sulphur Company
Durkee Famous Foods (Div. of Glidden Company)
Philadelphia Quartz Company
Colgate-Palm Olive-Peet Company
Armco Drainage & Metal Products Inc. Pacific Paint & Varnish Co.
J. J. Lukanish Company; household appliances
California Ink Company
Consolidated Western Steel Corp. (Div. of U. S. Steel)
Food Machinery & Chemical Corp. (Div. of Westvaco Chemical)

The northern boundary of the Oakland reciprocal switching zone limit is situated a few blocks further to the north.